

## Product datasheet for **TA354871**

### RhoGDI (ARHGDI) Rabbit Polyclonal Antibody

#### Product data:

Product Type:	Primary Antibodies
Applications:	WB
Recommended Dilution:	WB 0.1-1 µg/ml ELISA 0.01-0.1 µg/ml IP 2-5 µg/ml IHC 2-10 µg/ml FC 5-10 µg/ml
Reactivity:	Human, Mouse, Rat
Host:	Rabbit
Isotype:	IgG
Clonality:	Polyclonal
Immunogen:	A synthetic peptide derived from C-Terminus of human RhoGDI protein. This sequence is identical among human, rat, mouse, bovine, chicken and dog.
Formulation:	This affinity purified antibody is supplied in sterile Phosphate buffered saline (pH7.2) containing antibody stabilizer.
Purification:	The Rabbit IgG is purified by Epitope Affinity Purification
Conjugation:	Unconjugated
Storage:	Store at -20°C as received.
Stability:	Stable for 12 months from date of receipt.
Predicted Protein Size:	~23 kDa
Gene Name:	Rho GDP dissociation inhibitor alpha
Database Link:	<a href="#">NP_001172006</a> <a href="#">Entrez Gene 192662 Mouse</a> <a href="#">Entrez Gene 360678 Rat</a> <a href="#">Entrez Gene 396 Human</a> <a href="#">P52565</a>



[View online »](#)

**Background:**

Rho GTPases (Rac, Rho, and Cdc42) play important roles in regulating cell function through their ability to coordinate the actin cytoskeleton, modulate the formation of signaling reactive oxidant species, and control gene transcription. Activation of Rho GTPase signaling pathways requires the regulated release of Rho GTPases from Rho-GDI complexes, followed by their reuptake after membrane cycling. There are two isoforms, Rho-GDI alpha and Rho-GDI beta play synergistic roles in cell migration and development by modulating activation cycle of the Rho proteins. Src kinase binds and phosphorylates RhoGDI both in vitro and in vivo at Tyr156 which causes a dramatic decrease in the ability of RhoGDI to form a complex with RhoA, Rac1, or Cdc42. Src-mediated RhoGDI phosphorylation is a novel physiological mechanism for regulating Rho GTPase cytosol membrane-cycling and activity.

**Synonyms:**

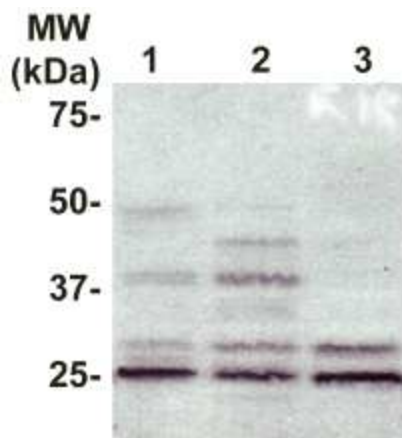
GDIA1; HEL-S-47e; NPHS8; RHOGDI; RHOGDI-1

**Protein Families:**

Druggable Genome

**Protein Pathways:**

Neurotrophin signaling pathway

**Product images:**

WB: The whole lysate derived from MCF7 (Lane 1) and mouse liver (lane 2), rat heart (Lane 3) were separated in 12% SDS-PAGE and transferred onto NC membrane followed by immunoblotting of Rabbit antiRhoGDI at 1:1000. An immunoreactive band at ~24 kDa was observed.