

## Product datasheet for **TA354847**

### NF- $\kappa$ B p65 (RELA) Rabbit Polyclonal Antibody

#### Product data:

Product Type:	Primary Antibodies
Applications:	WB
Recommended Dilution:	WB 0.1-1 $\mu$ g/ml ELISA 0.01-0.1 $\mu$ g/ml IP 2-5 $\mu$ g/ml IHC 2-5 $\mu$ g/ml FC Not tested
Reactivity:	Human, Mouse
Host:	Rabbit
Isotype:	IgG
Clonality:	Polyclonal
Immunogen:	A synthetic peptide derived from epitope -GEGTLSEP- with the phosphorylation site Thr435 of human NF- $\kappa$ B p65 protein. This sequence is identical to human, mouse and rat.
Formulation:	This affinity purified antibody is supplied in sterile Tris-buffered saline (pH7.2) containing antibody stabilizer.
Purification:	The Rabbit IgG is purified by site-modified Epitope Affinity Purification.
Conjugation:	Unconjugated
Storage:	Store at -20°C as received.
Stability:	Stable for 12 months from date of receipt.
Predicted Protein Size:	65 kDa
Gene Name:	RELA proto-oncogene, NF- $\kappa$ B subunit
Database Link:	<a href="#">NP_001138610</a> <a href="#">Entrez Gene 19697 Mouse</a> <a href="#">Entrez Gene 5970 Human</a> <a href="#">Q04206</a>



[View online »](#)

**Background:**

NF $\kappa$ B is a heterodimer that consists of a 50 kDa DNA binding subunit (p50/NF $\kappa$ B1) and a 65 kDa transactivation subunit (p65/RelA). Both of these subunits exhibit sequence homology to the proto-oncogene c-Rel. The p50 has an isoform called p49/p52, and both proteins are derived from the amino-terminal of precursor protein p105 and p100. The p50/p65 heterodimer remains in the cytosol in an inactive form as a complex with its inhibitor, I $\kappa$ B. Upon stimulation of cells by a wide variety of stimuli such as lipopolysaccharide (LPS), pro-inflammatory cytokines (IL-1 & TNF, etc.), and viral infection, I $\kappa$ B is phosphorylated and degraded by proteasome. The active NF $\kappa$ B heterodimer is translocated into the nucleus and induces gene expression. The inhibition of p53 activity is dependent upon phosphorylation of p65 (RelA) at S536 by the upstream kinase IKK beta.

**Synonyms:**

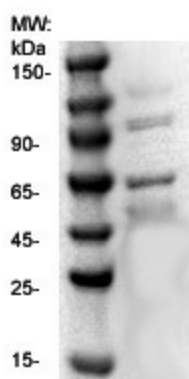
NFKB3; p65

**Protein Families:**

Druggable Genome, Transcription Factors

**Protein Pathways:**

Acute myeloid leukemia, Adipocytokine signaling pathway, Apoptosis, B cell receptor signaling pathway, Chemokine signaling pathway, Chronic myeloid leukemia, Cytosolic DNA-sensing pathway, Epithelial cell signaling in Helicobacter pylori infection, MAPK signaling pathway, Neurotrophin signaling pathway, NOD-like receptor signaling pathway, Pancreatic cancer, Pathways in cancer, Prostate cancer, RIG-I-like receptor signaling pathway, Small cell lung cancer, T cell receptor signaling pathway, Toll-like receptor signaling pathway

**Product images:**

WB: The whole tissue lysate derived from mouse brain was separated in 10% SDS-PAGE, transferred onto NC membrane, and immunoblotted by Rabbit anti-NF $\kappa$ B p65 (pT435) antibody at 1:500. An immunoreactive band around ~65 kDa is observed.