

## Product datasheet for **TA354819**

### **PAX8 Mouse Monoclonal Antibody [Clone ID: B1C1]**

#### **Product data:**

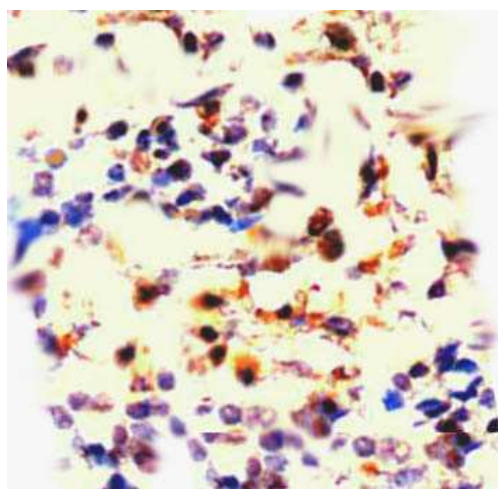
<b>Product Type:</b>	Primary Antibodies
<b>Clone Name:</b>	B1C1
<b>Applications:</b>	IHC, WB
<b>Recommended Dilution:</b>	WB 0.1-1 µg/ml ELISA 0.01-0.1 µg/ml IP 2-5 µg/ml IHC 2-10 µg/ml FC 5-10 µg/ml
<b>Reactivity:</b>	Human
<b>Host:</b>	Mouse
<b>Isotype:</b>	IgG1
<b>Clonality:</b>	Monoclonal
<b>Immunogen:</b>	Recombinant Melan-A Protein
<b>Formulation:</b>	This affinity purified antibody is supplied in sterile Phosphate buffered saline (pH7.2) containing antibody stabilizer.
<b>Purification:</b>	The mouse IgG is purified by Protein A-Affinity Chromatography according to Isotyping
<b>Conjugation:</b>	Unconjugated
<b>Storage:</b>	Store at -20°C as received.
<b>Stability:</b>	Stable for 12 months from date of receipt.
<b>Predicted Protein Size:</b>	48 kDa
<b>Gene Name:</b>	paired box 8
<b>Database Link:</b>	<a href="#">NP_003457</a> <a href="#">Entrez Gene 7849 Human</a> <a href="#">Q06710</a>
<b>Synonyms:</b>	OTTHUMP00000158659; OTTHUMP00000158660; paired box 8; paired domain gene 8
<b>Protein Families:</b>	Druggable Genome, Transcription Factors
<b>Protein Pathways:</b>	Pathways in cancer, Thyroid cancer



[View online »](#)

**Product images:**

WB: The cell lysate derived from MCF-7 was immunoblotted by Mouse anti-PAX8 antibody at 1:500. An immunoreactive band is observed at 48 kDa.



IHC: The MCF7 cells was stained with mouse anti-PAX8 antibody at 1:200. (Note: formalin-fixed, paraffin-embedded sections need 15 minutes heatinduced epitope retrieval in 10 mM citrate buffer, pH 6.0, and 30 minutes incubation at room temperature with the primary antibody.