

Product datasheet for **TA354812**

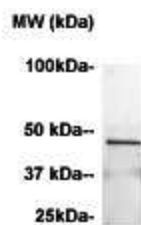
CCR2 Mouse Monoclonal Antibody [Clone ID: 9H6]

Product data:

Product Type:	Primary Antibodies
Clone Name:	9H6
Applications:	WB
Recommended Dilution:	WB 0.1-1 µg/ml ELISA 0.01-0.1 µg/ml IP 2-5 µg/ml IHC 2-10 µg/ml FC 5-10 µg/ml
Reactivity:	Human
Host:	Mouse
Isotype:	IgG1
Clonality:	Monoclonal
Formulation:	This affinity purified antibody is supplied in sterile Phosphate buffered saline (pH7.2) containing antibody stabilizer.
Purification:	The mouse IgG is purified by Protein A-Affinity Chromatography according to Isotyping
Conjugation:	Unconjugated
Storage:	Store at -20°C as received.
Stability:	Stable for 12 months from date of receipt.
Predicted Protein Size:	~41 kDa
Gene Name:	C-C motif chemokine receptor 2
Database Link:	NP_001116513 Entrez Gene 729230 Human P41597
Synonyms:	CC-CKR-2; CCR-2; CCR2A; CCR2B; CD192; KCR2; CKR2A; CKR2B; CMKBR2; MCP-1-R
Protein Families:	Druggable Genome, Transmembrane
Protein Pathways:	Chemokine signaling pathway, Cytokine-cytokine receptor interaction



[View online »](#)

Product images:

WB: The cell lysate derived from Jurkat was resolved onto 10% SDS-PAGE, transferred onto NC Membrane, then followed by an immunoprobining with mouse anti-CCR2 at 1:500. An immunoreactive band is observed around ~41 kDa.