

## Product datasheet for **TA354764**

### CD4 Mouse Monoclonal Antibody [Clone ID: ABM102]

#### Product data:

Product Type:	Primary Antibodies
Clone Name:	ABM102
Applications:	WB
Recommended Dilution:	WB 0.1-1 µg/ml ELISA 0.01-0.1 µg/ml IP 2-5 µg/ml IHC 2-10 µg/ml FC 5-10 µg/ml
Reactivity:	Human
Host:	Mouse
Isotype:	IgG1
Clonality:	Monoclonal
Immunogen:	Human T cells expressed CD4
Formulation:	This affinity purified antibody is supplied in sterile Phosphate buffered saline (pH7.2) containing antibody stabilizer.
Purification:	The mouse IgG is purified by Protein A-Affinity Chromatography according to Isotyping
Conjugation:	Unconjugated
Storage:	Store at -20°C as received.
Stability:	Stable for 12 months from date of receipt.
Predicted Protein Size:	~21 kDa
Gene Name:	CD4 molecule
Database Link:	<a href="#">NP_000607</a> <a href="#">Entrez Gene 920 Human</a> <a href="#">P01730</a>
Background:	CD4 is a glycoprotein consisting of up to five polypeptide chains (gp20, gp26, p16, p20, p28). CD3 is required for proper assembly, trafficking and surface expression of TCR complex. CD3 is expressed by thymocytes in a developmentally regulated manner and by all mature T cells. CD3 is involved in T cell activation, proliferation and apoptosis pathway. This protein is present on virtually all peripheral blood T cells and thymocytes. This anti-CD3 antibody is commonly used as a phenotypic marker for human T cells.
Synonyms:	CD4mut

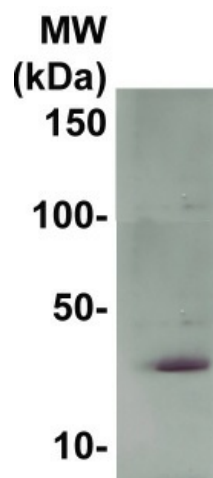


[View online »](#)

**Protein Families:** Adult stem cells, Druggable Genome, ES Cell Differentiation/IPS, Induced pluripotent stem cells, Transmembrane

**Protein Pathways:** Antigen processing and presentation, Cell adhesion molecules (CAMs), Hematopoietic cell lineage, Primary immunodeficiency, T cell receptor signaling pathway

**Product images:**



WB: The cell lysate derived from Reh cells was immunoblotted by the Mouse anti-CD4 at 1:500. An immunoreactive band around ~21 kDa was observed.