

Product datasheet for **TA354761**

PLAC1 Rabbit Polyclonal Antibody

Product data:

Product Type:	Primary Antibodies
Applications:	WB
Recommended Dilution:	WB 0.1-1 µg/ml ELISA 0.01-0.1 µg/ml IP 2-5 µg/ml IHC 2-10 µg/ml FC 5-10 µg/ml
Reactivity:	Human, Mouse, Rat
Host:	Rabbit
Isotype:	IgG
Clonality:	Polyclonal
Immunogen:	A panel of synthetic peptides corresponding to the predicted multiple phosphorylation sites, including S121, Y147, S156. Those sequences are identical to human, rat and mouse.
Formulation:	This affinity purified antibody is supplied in sterile Tris-buffered saline (pH7.2) containing antibody stabilizer.
Purification:	The Rabbit IgG is purified by Epitope Affinity Purification
Conjugation:	Unconjugated
Storage:	Store at -20°C as received.
Stability:	Stable for 12 months from date of receipt.
Predicted Protein Size:	~22 kDa
Gene Name:	placenta specific 1
Database Link:	NP_068568 Entrez Gene 56096 Mouse Entrez Gene 317316 Rat Entrez Gene 10761 Human Q9HBJ0



[View online »](#)

Background:

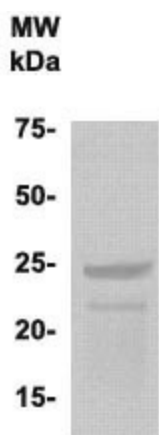
The PLAC1, a placenta-specific gene, which encodes a putative cell surface protein, is highly expressed in placenta, testis, cancer cell lines and lung tumors. PLAC1 is exclusively expressed by cells of trophoblastic lineage in the mouse, and maps to a region of the X-chromosome known to be important in placenta growth. PLAC1 is also expressed in human hepatocellular cancer tissues as well as in several other types of cancer tissues and/or tumor cell lines. PLAC1 represents a new class of tumor associated antigen with restricted expression in placenta and cancer tissues, which may serve as a target for cancer vaccination. The phosphorylation of PLAC1 by kinases CDK5, PKC may be involved in tumor associated process.

Synonyms:

CT92; OOSP2L

Protein Families:

Secreted Protein

Product images:

WB: The cell lysate derived HepG2 was in 12% SDS-PAGE, transferred onto NC membrane, and immunoblotted by Rabbit anti-PLAC1 (Phosphospecific) at 1:500. An immunoreactive major band was observed at ~24 kDa.