

Product datasheet for **TA354759**

PTEN Mouse Monoclonal Antibody [Clone ID: A8A8]

Product data:

Product Type:	Primary Antibodies
Clone Name:	A8A8
Applications:	IHC, WB
Recommended Dilution:	WB 0.1-1 µg/ml ELISA 0.01-0.1 µg/ml IP 2-5 µg/ml IHC 2-10 µg/ml FC 5-10 µg/ml
Reactivity:	Human, Mouse, Rat
Host:	Mouse
Isotype:	IgG
Clonality:	Monoclonal
Immunogen:	A 403 aa of full length human pTEN recombinant protein.
Formulation:	This affinity purified antibody is supplied in sterile Phosphate buffered saline (pH7.2) containing antibody stabilizer.
Purification:	The mouse IgG is purified by Protein A-Affinity Chromatography according to Isotyping
Conjugation:	Unconjugated
Storage:	Store at -20°C as received.
Stability:	Stable for 12 months from date of receipt.
Predicted Protein Size:	~50 kDa
Gene Name:	phosphatase and tensin homolog
Database Link:	NP_000305 Entrez Gene 19211 Mouse Entrez Gene 50557 Rat Entrez Gene 5728 Human P60484
Background:	The phosphatase and tensin homologue (PTEN) tumor suppressor is a phosphatidylinositol 3-phosphatase that contains the catalytic signature motif (HCXXGXXRS/T) found in all members of the protein tyrosine phosphatase family. PTEN is mutated in a wide range of cancers. In vitro, the recombinant PTEN can be regulated by phosphorylation on multiple serine and threonine residues in its C-terminus, such as CK2, GSK3β at Ser-362, 370 and 385. It antagonizes signal transduction downstream of PI-3 kinases affecting cell proliferation, apoptosis and migration. Loss-of-function mutations in the PTEN gene lead to constitutive activation of multiple signaling pathways.



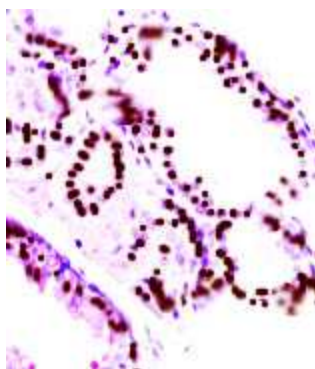
[View online »](#)

Synonyms: 10q23del; BZS; CWS1; DEC; GLM2; MHAM; MMAC1; PTEN1; TEP1

Protein Families: Druggable Genome, Phosphatase

Protein Pathways: Endometrial cancer, Focal adhesion, Glioma, Inositol phosphate metabolism, Melanoma, p53 signaling pathway, Pathways in cancer, Phosphatidylinositol signaling system, Prostate cancer, Small cell lung cancer, Tight junction

Product images:



WB: The cell lysates derived from mouse brain were immunoprobed by Mouse anti-PTEN antibody at 1:1000. An immunoreactive band is observed around ~50 kDa.



IHC: Human prostate tissue was stained with Mouse anti-PTEN antibody, at 1:200 for 10 min at RT. Staining of formalin-fixed tissue requires boiling tissue sections in 10 mM Citrate Buffer, pH 6.0 for 10 min followed by cooling at RT for 20 min.