

## Product datasheet for **TA354756**

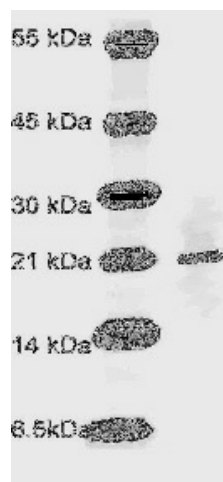
### **BCL2L2 Rabbit Polyclonal Antibody**

#### **Product data:**

<b>Product Type:</b>	Primary Antibodies
<b>Applications:</b>	WB
<b>Recommended Dilution:</b>	WB 0.1-1 µg/ml ELISA 0.01-0.1 µg/ml IP 2-5 µg/ml IHC 2-10 µg/ml FC 5-10 µg/ml
<b>Reactivity:</b>	Human, Mouse, Rat, Chicken, Bovine, Canis
<b>Host:</b>	Rabbit
<b>Isotype:</b>	IgG
<b>Clonality:</b>	Polyclonal
<b>Immunogen:</b>	A synthetic peptide derived from N-terminus of human BCL-W protein. This sequence is identical among human, rat and mouse origins.
<b>Formulation:</b>	This affinity purified antibody is supplied in sterile Phosphate buffered saline (pH7.2) containing antibody stabilizer.
<b>Purification:</b>	The Rabbit IgG is purified by Epitope Affinity Purification
<b>Conjugation:</b>	Unconjugated
<b>Storage:</b>	Store at -20°C as received.
<b>Stability:</b>	Stable for 12 months from date of receipt.
<b>Predicted Protein Size:</b>	21 kDa
<b>Gene Name:</b>	BCL2 like 2
<b>Database Link:</b>	<a href="#">NP_001186768</a> <a href="#">Entrez Gene 12050 Mouse</a> <a href="#">Entrez Gene 60434 Rat</a> <a href="#">Entrez Gene 599 Human</a> <a href="#">Q92843</a>
<b>Background:</b>	BCL-w is a member of the Bcl-2 family. The gene codes for a 21 kDa protein which is essential for the regulation of cellular survival, and that is up-regulated in different human tumors, such as gastric and colorectal carcinomas. Inhibition of AKT activity may promote apoptosis through the down-regulation of Bcl-w protein and the consequential reduction in interaction of Bcl-w with pro-apoptotic members of the Bcl-2 family.
<b>Synonyms:</b>	BCL-W; BCL2-L-2; BCLW; PPP1R51
<b>Protein Families:</b>	Druggable Genome, Transmembrane



[View online »](#)

**Product images:**

WB: The whole cell lysate derived from HeLa cell was separated in 12% SDSPAGE, transferred onto NC membrane, and immunoblotted by Rabbit anti-Bcl-w antibody at 1:500. An immunoreactive band around ~21 kDa was observed.