

Product datasheet for **TA354753**

MIG7 Rabbit Polyclonal Antibody

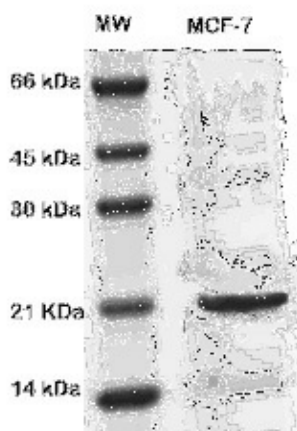
Product data:

Product Type:	Primary Antibodies
Applications:	WB
Recommended Dilution:	WB 0.1-1 µg/ml ELISA 0.01-0.1 µg/ml IP 2-5 µg/ml IHC 2-10 µg/ml FC 5-10 µg/ml
Reactivity:	Human
Host:	Rabbit
Isotype:	IgG
Clonality:	Polyclonal
Immunogen:	A synthetic peptide corresponding to the N-terminus of human MIG-7 protein.
Formulation:	This affinity purified antibody is supplied in sterile Phosphate buffered saline (pH7.2) containing antibody stabilizer.
Purification:	The Rabbit IgG is purified by Epitope Affinity Purification
Conjugation:	Unconjugated
Storage:	Store at -20°C as received.
Stability:	Stable for 12 months from date of receipt.
Predicted Protein Size:	~23 kDa
Gene Name:	mig-7
Database Link:	Entrez Gene 723788 Human
Background:	Migration-inducing protein 7 (MIG7 or Mig-7) is a cysteine-rich protein found in cell membranes and cytoplasm of carcinoma cells. It is a new potential marker for circulating and migrating cancer cells where it facilitates tumor cell dissemination by increasing invasion and promoting the process of vasculogenic mimicry. Mig-7 is expressed restricted in carcinoma cells, thus it has significant potential as an early marker of migrating and circulating carcinoma cells.



[View online »](#)

Product images:



WB: The cell lysate derived from MCF-7 was immunoprobed by Rabbit anti-MIG-7 at 1:500. An immunoreactive band is observed around ~