

## Product datasheet for **TA354751**

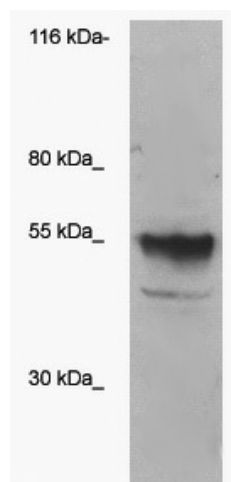
### ST6Gal Rabbit Polyclonal Antibody

#### Product data:

Product Type:	Primary Antibodies
Applications:	WB
Recommended Dilution:	WB 0.1-1 µg/ml ELISA 0.01-0.1 µg/ml IP 2-5 µg/ml IHC 2-10 µg/ml FC 5-10 µg/ml
Reactivity:	Human, Drosophila
Host:	Rabbit
Isotype:	IgG
Clonality:	Polyclonal
Immunogen:	A synthetic peptide derived from the internal domain of Sialyltransferase protein from drosophila origin
Formulation:	This affinity purified antibody is supplied in sterile Phosphate buffered saline (pH7.2) containing antibody stabilizer.
Purification:	The Rabbit IgG is purified by Epitope Affinity Purification
Conjugation:	Biotin
Storage:	Store at -20°C as received.
Stability:	Stable for 12 months from date of receipt.
Predicted Protein Size:	~51 kDa
Background:	Sialyltransferases are enzyme that transfer sialic acid to nascent oligosaccharide. Each sialyltransferase is specific for a particular sugar substrate. Sialyltransferases add sialic acid to the terminal portions of the sialylated glycolipids or to the N- or O-linked sugar chains of glycoproteins. The animal sialyltransferases are Golgi type II transmembrane glycosyltransferases. While the enzyme ST6Gal I uses the Galβ1-4GlcNAc-R as the acceptor substrate which present in insects.



[View online »](#)

**Product images:**

WB: The whole cell lysate derived from HEK293 over-expressed ST6Gal protein was loaded in SDS-PAGE, transferred onto a NC membrane, then blotted by Rabbit anti-ST6Gal antibody at 1:500. An immune reactive band is observed around ~52kD. (The biotinylated antibody was confirmed by HRP-Streptavidin)