

Product datasheet for **TA354745**

ROCK2 Rabbit Polyclonal Antibody

Product data:

Product Type:	Primary Antibodies
Applications:	WB
Recommended Dilution:	WB 0.1-1 µg/ml ELISA 0.01-0.1 µg/ml IP 2-5 µg/ml IHC 2-10 µg/ml FC 5-10 µg/ml
Reactivity:	Human, Mouse, Rat, Chicken, Bovine, Canis
Host:	Rabbit
Isotype:	IgG
Clonality:	Polyclonal
Immunogen:	A synthetic peptide corresponding to the epitope -CDTAV- with a single phosphorylation site Thr249 of human Rho Kinase/RockII protein. This sequence is identical among human, mouse, rat, chicken, dog and bovine.
Formulation:	This affinity purified antibody is supplied in sterile Tris-buffered saline (pH7.2) containing antibody stabilizer.
Purification:	The Rabbit IgG is purified by site-modified Epitope Affinity Purification.
Conjugation:	Unconjugated
Storage:	Store at -20°C as received.
Stability:	Stable for 12 months from date of receipt.
Predicted Protein Size:	165 kDa
Gene Name:	Rho associated coiled-coil containing protein kinase 2
Database Link:	NP_001308572 Entrez Gene 19878 MouseEntrez Gene 25537 RatEntrez Gene 9475 Human O75116



[View online »](#)

Background:

Rho A-dependent kinase (ROCKII), or ROK-alpha, is identified a serine/threonine kinase, a downstream effector of the small GTPase Rho, mediating effects of Rho on the actin cytoskeleton, formation of actin stress fibers and focal adhesions, ROCKII alters cardiac myofilament response to Ca²⁺ by mechanisms involving phosphorylation of thin filament proteins. ROCK-II induces a depression in maximum ATPase rate and tension, which is associated with phosphorylation of troponin T (TnT), troponin I (TnI), and myosin-binding protein C (C-protein). The phosphorylation of Rho-kinase at Thr 249, Thr 396 plays important role in G-protein signaling..

Synonyms:

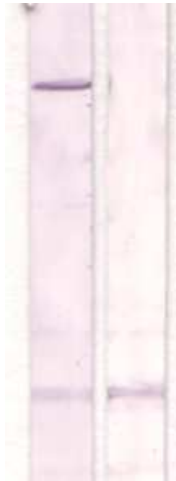
ROCK-II

Protein Families:

Druggable Genome, Protein Kinase

Protein Pathways:

Axon guidance, Chemokine signaling pathway, Focal adhesion, Leukocyte transendothelial migration, Pathogenic Escherichia coli infection, Regulation of actin cytoskeleton, TGF-beta signaling pathway, Vascular smooth muscle contraction, Wnt signaling pathway

Product images:

WB: The cell lysate derived from Conditioned 3T3 cell was immunoprecipitated by Rabbit anti-Rho Kinase (pT249), then immunoprobed by the same antibody at 1:500 (lane 1). Lane 2 is a negative control.