

Product datasheet for **TA354739**

H3FA (HIST1H3A) Rabbit Polyclonal Antibody

Product data:

Product Type:	Primary Antibodies
Applications:	WB
Recommended Dilution:	WB 0.1-1 µg/ml ELISA 0.01-0.1 µg/ml IP 2-5 µg/ml IHC 2-10 µg/ml FC 5-10 µg/ml
Reactivity:	Human, Mouse, Rat
Host:	Rabbit
Isotype:	IgG
Clonality:	Polyclonal
Immunogen:	A synthetic peptide containing -QTARKSTGGKA-with phosphorylated serine 10 of human Histone H3.
Formulation:	This affinity purified antibody is supplied in sterile Tris-buffered saline (pH7.2) containing antibody stabilizer.
Purification:	The Rabbit IgG is purified by site-modified Epitope Affinity Purification.
Conjugation:	Unconjugated
Storage:	Store at -20°C as received.
Stability:	Stable for 12 months from date of receipt.
Predicted Protein Size:	17 kDa
Gene Name:	histone cluster 1, H3a
Database Link:	NP_003520 Entrez Gene 360198 MouseEntrez Gene 679994 RatEntrez Gene 8350 Human P68431
Background:	Histones are basic nuclear proteins that together with DNA make up the nucleosome structure in eukaryotes. Nucleosomes consist of approximately 146 bp of DNA wrapped around a histone octamer composed of pairs of each of the four core histones (H2A, H2B, H3, and H4). Histone H1 and the N-terminal tail of H3 have key roles in the folding and inter-association of the chromatin fiber. Histone phosphorylation influences transcription, chromosome condensation, DNA repair and apoptosis. The phosphorylation of Histone H3 at Serine 10 is linked to gene activation, prevents methylation at Lys9 but facilitates acetylation of H3 and H4. pSer10 is also associated with c-fos and c-myc genes.

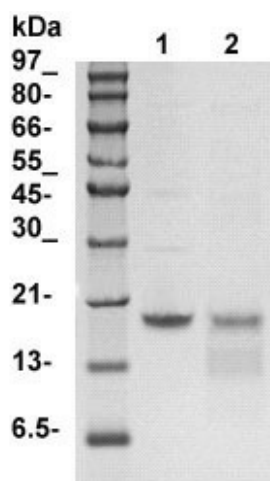


[View online »](#)

Synonyms: A; H3; H3FA

Protein Pathways: Systemic lupus erythematosus

Product images:



WB: The Cell nuclear extract derived from HeLa cells (lane 1) or treated with phosphatase (lane 2) were resolved onto 12% SDS-PAGE, transferred onto NC membrane, and immuno-blotted by Rb anti-Histone H3 (pS10) at 1:500. An immunoreactive band around ~17 kDa was observed.