

Product datasheet for **TA354735**

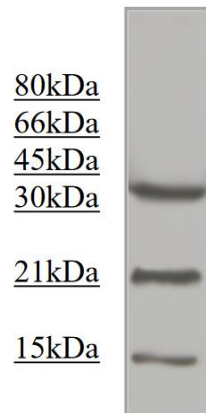
H3FA (HIST1H3A) Rabbit Polyclonal Antibody

Product data:

Product Type:	Primary Antibodies
Applications:	IP
Recommended Dilution:	WB 0.1-1 µg/ml ELISA 0.01-0.1 µg/ml IP 2-5 µg/ml IHC 2-10 µg/ml FC 5-10 µg/ml
Reactivity:	Human, Mouse, Rat
Host:	Rabbit
Isotype:	IgG
Clonality:	Polyclonal
Immunogen:	A synthetic peptide containing RT[Me2-K]QT in which Me2-K corresponds to dimethyl lysine 4 of human histone H3.
Formulation:	This affinity purified antibody is supplied in sterile Phosphate buffered saline (pH7.2) containing antibody stabilizer.
Purification:	The Rabbit IgG is purified by site-modified Epitope Affinity Purification.
Conjugation:	Unconjugated
Storage:	Store at -20°C as received.
Stability:	Stable for 12 months from date of receipt.
Predicted Protein Size:	17 kDa
Gene Name:	histone cluster 1, H3a
Database Link:	NP_003520 Entrez Gene 360198 MouseEntrez Gene 679994 RatEntrez Gene 8350 Human P68431
Synonyms:	A; H3; H3FA
Protein Pathways:	Systemic lupus erythematosus



[View online »](#)

Product images:

IP: The nuclear extract derived from 3T3 were immunoprecipitated by 4 µg of Rabbit anti-Di-methyl Histone H3 (K4), at 1:1000. An immunoreactive band at ~17kDa is observed. Note: ~50 kDa and ~22 kDa are the rabbit immunoglobulin heavy and light chain