

Product datasheet for **TA354727**

Androgen Receptor (AR) Rabbit Polyclonal Antibody

Product data:

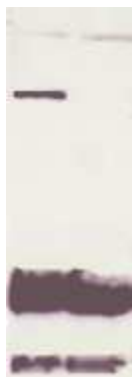
Product Type:	Primary Antibodies
Applications:	Dot, WB
Recommended Dilution:	WB 0.1-1 µg/ml ELISA 0.01-0.1 µg/ml IP 2-5 µg/ml IHC 2-10 µg/ml FC 5-10 µg/ml
Reactivity:	Human, Mouse, Rat
Host:	Rabbit
Isotype:	IgG
Clonality:	Polyclonal
Immunogen:	A synthetic peptide surrounding the epitope -EASGA- without phosphorylation. This sequence is identical among human, rat, mouse, dog.
Formulation:	This affinity purified antibody is supplied in sterile Tris-buffered saline (pH7.2) containing antibody stabilizer.
Purification:	The Rabbit IgG is purified by Epitope Affinity Purification
Conjugation:	Unconjugated
Storage:	Store at -20°C as received.
Stability:	Stable for 12 months from date of receipt.
Predicted Protein Size:	110 kDa
Gene Name:	androgen receptor
Database Link:	NP_000035 Entrez Gene 11835 Mouse Entrez Gene 24208 Rat Entrez Gene 367 Human P10275
Background:	The androgen receptor (AR), a member of nuclear receptor family, is essential for the growth of prostate cancer cells. The phosphorylation of AR is induced by growth factors and elevated in hormone-refractory prostate tumors. It's been reported the signal pathway of the PI3K/AKT, Src to be responsible for phosphorylation of AR at Ser213/210 and Ser81. The abnormal activation of AR is observed in many diseases, such as prostate cancer.
Synonyms:	AIS; AR8; DHTR; HUMARA; HYSP1; KD; NR3C4; SBMA; SMAX1; TFM
Protein Families:	Druggable Genome, Nuclear Hormone Receptor, Transcription Factors



[View online »](#)

Protein Pathways: Oocyte meiosis, Pathways in cancer, Prostate cancer

Product images:



WB: 5 mg of the whole cell lysate derived from conditioned LNCaP were immunoprecipitated by 4 ug of Rabbit anti-AR (pSer210) (lane 1) or pre adsorbed by immunization peptide (lane 2) followed by rabbit anti-AR (NT) at 1:500.



DB: 1 ug peptide was blot onto NC membrane A: AR (pS210) B: AR (Nonphospho); were blotted at a 1:2000 dilution by: 1: Rabbit anti-AR (pS210), ; 2: Rabbit anti-AR (paired 210)