

## Product datasheet for **TA354722**

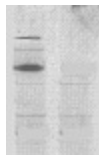
### Corin Rabbit Polyclonal Antibody

#### Product data:

Product Type:	Primary Antibodies
Applications:	WB
Recommended Dilution:	WB 0.1-1 µg/ml ELISA 0.01-0.1 µg/ml IP 2-5 µg/ml IHC 2-10 µg/ml FC 5-10 µg/ml
Reactivity:	Human, Mouse, Rat
Host:	Rabbit
Isotype:	IgG
Clonality:	Polyclonal
Immunogen:	A synthetic peptide sequence derived from 300aa-450aa of mouse corin protein
Formulation:	This affinity purified antibody is supplied in sterile Phosphate buffered saline (pH7.2) containing antibody stabilizer.
Purification:	The Rabbit IgG is purified by Epitope Affinity Purification
Conjugation:	Unconjugated
Storage:	Store at -20°C as received.
Stability:	Stable for 12 months from date of receipt.
Predicted Protein Size:	~120 kDa
Gene Name:	corin
Database Link:	<a href="#">NP_001116228</a> <a href="#">Entrez Gene 10699 Human</a> <a href="#">Entrez Gene 289596 Rat</a> <a href="#">Entrez Gene 53419 Mouse</a> <a href="#">Q9Z319</a>
Background:	Corin, is a glycosylated protease on the cell surface as a single pass type II membrane protein. It is located on trial and brain natriuretic peptides (ANP and NNP) expressing cell surfaces. It may occur in both zymogen and catalytically active forms. The multi-domain transmembrane serine protease corin cleaves pro-atrial natriuretic peptide (pro-ANP) in vitro to generate an active hormone, ANP at R123-S124. Corin is higher expressed on cardiomyocytes. It may also contribute to the regulation of the natriuretic peptide system in vivo, and might be an attractive target for treatment of cardiovascular diseases.
Synonyms:	ATC2; CRN; Lrp4; MGC119742; pro-ANP-convertase; PRSC; TMPRSS10



[View online »](#)

**Product images:**

WB: The whole cell lysates derived from mouse heart (lane 1) or rat heart (lane 2) were immunoprobed by Rabbit anti-Corin (IN) at 1:500. An immunoreactive band is observed around ~120kDa. A faint band ~ 205 kDa is observed in mouse heart tissue.