

Product datasheet for **TA354715**

RHOA Rabbit Polyclonal Antibody

Product data:

Product Type:	Primary Antibodies
Applications:	Dot, WB
Recommended Dilution:	WB 0.1-1 µg/ml ELISA 0.01-0.1 µg/ml IP 2-5 µg/ml IHC 2-10 µg/ml FC 5-10 µg/ml
Reactivity:	Human, Rat, Mouse, Chicken, Canis
Host:	Rabbit
Isotype:	IgG
Clonality:	Polyclonal
Immunogen:	A synthetic peptide corresponding to the C-term of epitope KKKSG at a phosphorylation Ser188 of human Rho protein
Formulation:	This affinity purified antibody is supplied in sterile Tris-buffered saline (pH7.2) containing antibody stabilizer.
Purification:	The Rabbit IgG is purified by site-modified Epitope Affinity Purification.
Conjugation:	Unconjugated
Storage:	Store at -20°C as received.
Stability:	Stable for 12 months from date of receipt.
Predicted Protein Size:	~24 kDa
Gene Name:	ras homolog family member A
Database Link:	NP_001655 Entrez Gene 11848 Mouse Entrez Gene 117273 Rat Entrez Gene 387 Human P61586
Background:	Ras homolog gene family consists of RhoA, RhoB, RhoC proteins. These proteins interact directly with protein kinase (Rho kinase) to serve as downstream effectors of the activated GTPase. The Rho proteins are involved in the regulation of the actin cytoskeleton. Activation of Rho to the GTP bound state promotes formation of stress fibers and is required for the formation and maintenance of focal adhesions. Pathways stimulated by cytokines, hormones and various forms of stress utilize p21 proteins of the Rho family ² . Possible mediators for these responses include protein kinase such as p120PKN, and p150, ROKa/Rho-A kinase, myosin light chain (MLC), phosphatase and PIP 5-kinase. ³



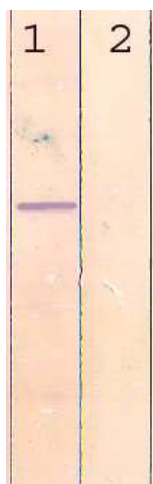
[View online »](#)

Synonyms: ARH12; ARHA; RHO12; RHOH12

Protein Families: Druggable Genome

Protein Pathways: Adherens junction, Axon guidance, Chemokine signaling pathway, Focal adhesion, Leukocyte transendothelial migration, Neurotrophin signaling pathway, Pathogenic Escherichia coli infection, Pathways in cancer, Regulation of actin cytoskeleton, T cell receptor signaling pathway, TGF-beta signaling pathway, Tight junction, Vascular smooth muscle contraction, Wnt signaling pathway

Product images:



WB: The cell lysate derived from conditioned MCF-7 was immunoprobed by Rabbit anti-Rho (pS188) at 1:500. An immunoreactive band is observed around ~ (1). This band is abolished by pre-incubation with immunizing peptide (2).



DB: 1 ug peptide was blot onto NC membrane (ARho (pS188); B-Rho (Nonphospho); C: Nonrelated Phosphopeptide) was blotted by Rabbit antiRho (pS188) at a 1:2000 dilution.