

Product datasheet for **TA354713**

SOCS4 Rabbit Polyclonal Antibody

Product data:

Product Type:	Primary Antibodies
Applications:	WB
Recommended Dilution:	WB 0.1-1 µg/ml ELISA 0.01-0.1 µg/ml IP 2-5 µg/ml IHC 2-10 µg/ml FC Not tested
Reactivity:	Human
Host:	Rabbit
Isotype:	IgG
Clonality:	Polyclonal
Immunogen:	A synthetic peptide corresponding to the C-terminus of SOCS-4 protein from human, mouse and rat origins.
Formulation:	This affinity purified antibody is supplied in sterile Phosphate buffered saline (pH7.2) containing antibody stabilizer.
Purification:	The Rabbit IgG is purified by Epitope Affinity Purification
Conjugation:	Unconjugated
Storage:	Store at -20°C as received.
Stability:	Stable for 12 months from date of receipt.
Predicted Protein Size:	50 kDa
Gene Name:	suppressor of cytokine signaling 4
Database Link:	NP_543143 Entrez Gene 122809 Human Q8WXH5



[View online »](#)

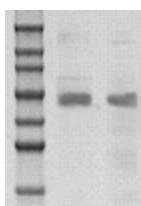
Background: Cytokines induce a variety of biological responses by binding to specific cell surface receptors and activating cytoplasmic signal transduction pathways which are suppressed by other transcriptional factors. Proteins that mediate these signals from the cell surface to the nucleus include JAKs and STATs, while SOCS (Suppressor of cytokine signaling) proteins inhibit those signaling. The SOCS family comprises at least 8 members, SOCS1 to SOCS7 and CIS (cytokine inducible SH2 containing protein). Structurally, the SOCS proteins are composed of an N terminal region of variable length and amino acid composition, a central SH2 domain, and a previously unrecognized C terminal motif named the SOCS box. SOCS4, SOCS6 and SOCS7 are expressed ubiquitously in murine tissues.

Synonyms: SOCS7

Protein Families: Druggable Genome

Protein Pathways: Insulin signaling pathway, Jak-STAT signaling pathway, Type II diabetes mellitus

Product images:



WB: The tissue/cell lysates derived from mouse brain (lane 1), Hela (lane 2) were immuno-probed by Rabbit anti-SCOS-4 antibody at 1:500. An immunoreactive band is observed around ~50 kDa.