

Product datasheet for **TA354706**

HIF-1 alpha (HIF1A) Rabbit Polyclonal Antibody

Product data:

Product Type:	Primary Antibodies
Applications:	WB
Recommended Dilution:	WB 0.1-1 µg/ml ELISA 0.01-0.1 µg/ml IP 2-5 µg/ml IHC 2-10 µg/ml FC 5-10 µg/ml
Reactivity:	Mouse, Rat, Human
Host:	Rabbit
Isotype:	IgG
Clonality:	Polyclonal
Immunogen:	A twenty-one amino acids synthetic peptide corresponding to the internal sequence of HIF alpha protein. This sequence is identical to human, rat and mouse origins.
Formulation:	This affinity purified antibody is supplied in sterile Phosphate buffered saline (pH7.2) containing antibody stabilizer.
Purification:	The Rabbit IgG is purified by Epitope Affinity Purification
Conjugation:	Unconjugated
Storage:	Store at -20°C as received.
Stability:	Stable for 12 months from date of receipt.
Predicted Protein Size:	~97 kDa
Gene Name:	hypoxia inducible factor 1 alpha subunit
Database Link:	NP_001230013 Entrez Gene 15251 Mouse Entrez Gene 29560 Rat Entrez Gene 3091 Human Q16665



[View online »](#)

Background:

The hypoxia-inducible transcription factor 1 alpha (HIF-1 alpha) contributes significantly to the pathophysiology of major categories of human disease, including myocardial and cerebral ischemia, cancer, pulmonary hypertension, congenital heart disease and chronic obstructive pulmonary disease. HIF-1 is a transcription factor involved in mammalian oxygen homeostasis., HIF-1 is a heterodimer composed of HIF-1 alpha/beta subunits which binds to hypoxia-response elements (HREs) in the promoters of many genes involved in the adaptation to an environment of insufficient oxygen or hypoxia. Under hypoxic conditions, the lack of hydroxylation prevents HIF degradation, and increase transcriptional activity. Therefore, the concentration of HIF-1 alpha increases in the hypoxic cells. In contrast, HIF-1 beta remains stable under either condition.

Synonyms:

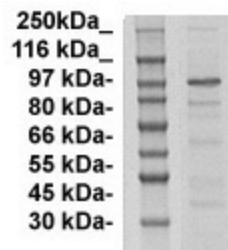
bHLHe78; HIF-1-alpha; HIF-1A; HIF-1alpha; HIF1; HIF1-ALPHA; MOP1; PASD8

Protein Families:

Transcription Factors

Protein Pathways:

mTOR signaling pathway, Pathways in cancer, Renal cell carcinoma

Product images:

WB: The tissue lysate derived from hypoxic rat brain was resolved onto 10% SDS-PAGE, transferred onto NC membrane, and immunoblotted by Rabbit anti-HIF-1 alpha at 1:500. A major immune-reactive band around ~95 kDa was observed.