

Product datasheet for **TA354705**

SCGB2A1 Rabbit Polyclonal Antibody

Product data:

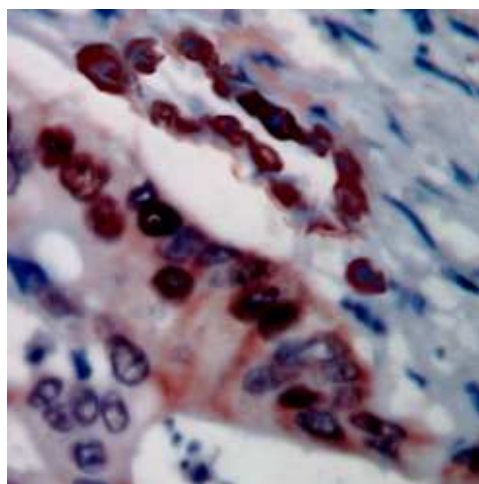
Product Type:	Primary Antibodies
Applications:	IHC, WB
Recommended Dilution:	WB 0.1-1 µg/ml ELISA 0.01-0.1 µg/ml IP 2-5 µg/ml IHC 2-10 µg/ml FC 5-10 µg/ml
Reactivity:	Human
Host:	Rabbit
Isotype:	IgG
Clonality:	Polyclonal
Immunogen:	A synthetic peptide corresponding to the inter-sequence of human mammaglobin protein.
Formulation:	This affinity purified antibody is supplied in sterile Phosphate buffered saline (pH7.2) containing antibody stabilizer.
Purification:	The Rabbit IgG is purified by Epitope Affinity Purification
Conjugation:	Unconjugated
Storage:	Store at -20°C as received.
Stability:	Stable for 12 months from date of receipt.
Predicted Protein Size:	10 kDa
Gene Name:	secretoglobin family 2A member 1
Database Link:	NP_002398 Entrez Gene 4246 Human O75556
Background:	Mammaglobin and lipophilin B, formed a covalent complex, belong to the secretoglobin superfamily. Mammaglobin has been currently discovered as a promising diagnostic marker for breast cancer. The mammaglobin/lipophilin B complex determination may be used a novel protein-based serological marker for breast cancer.
Synonyms:	LPHC; LPNC; MGB2; UGB3


[View online »](#)

Product images:



WB: The cell lysate derived from MCF-7 was immunoblotted by Rabbit anti-Mammoglobin antibody, at 1:500



IHC: Human breast cancer tissue stained with AntiMammoglobin antibody, at 1:100 for 10 min at RT. Staining of formalin-fixed tissue requires boiling tissue sections in 10 mM Citrate Buffer, pH 6.0 for 10 min followed by cooling at RT for 20 min.