

Product datasheet for **TA354696**

Nkx3.1 (NKX3-1) Rabbit Polyclonal Antibody

Product data:

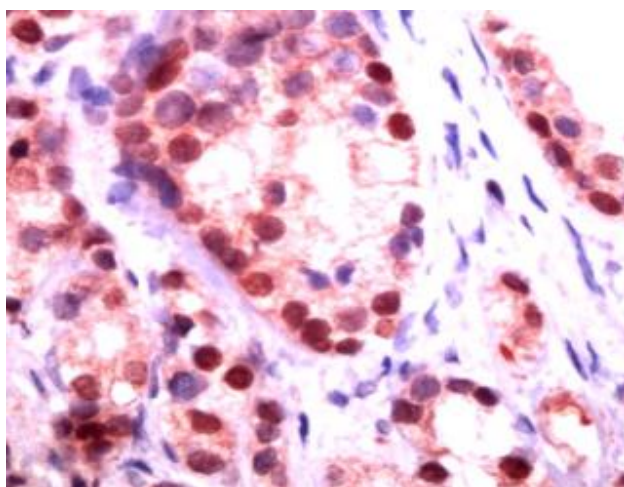
Product Type:	Primary Antibodies
Applications:	IHC, WB
Recommended Dilution:	WB 0.1-1 µg/ml ELISA 0.01-0.1 µg/ml IP 2-5 µg/ml IHC 2-10 µg/ml FC 5-10 µg/ml
Reactivity:	Human
Host:	Rabbit
Isotype:	IgG
Clonality:	Polyclonal
Immunogen:	Synthetic peptide corresponding to N-terminus of human NKX3.1
Formulation:	This affinity purified antibody is supplied in sterile Phosphate buffered saline (pH7.2) containing antibody stabilizer.
Purification:	The Rabbit IgG is purified by Epitope Affinity Purification
Conjugation:	Unconjugated
Storage:	Store at -20°C as received.
Stability:	Stable for 12 months from date of receipt.
Predicted Protein Size:	35 kDa
Gene Name:	NK3 homeobox 1
Database Link:	NP_001243268 Entrez Gene 4824 Human Q99801
Synonyms:	BAPX2; NKX3; NKX3.1; NKX3A
Protein Families:	Druggable Genome, Transcription Factors
Protein Pathways:	Pathways in cancer, Prostate cancer



[View online »](#)

Product images:

WB: The LNCaP cell lysate was immuno-blotted by Rabbit anti-NKX3.1 antibody, at 1:250 (Lane 1). Lane 2 was pre-incubated with immunizing peptide.



IHC: Human prostate cancer tissue stained with Anti-NKX3.1 antibody at 1:25 for 10 min at RT. Staining of formalin-fixed tissue requires boiling tissue sections in 10 mM Citrate Buffer, pH 6.0 for 10 min followed by cooling at RT for 20 min.