

## Product datasheet for **TA354688**

### LCK Rabbit Polyclonal Antibody

#### Product data:

Product Type:	Primary Antibodies
Applications:	WB
Recommended Dilution:	WB 0.1-1 µg/ml ELISA 0.01-0.1 µg/ml IP 2-5 µg/ml IHC 2-10 µg/ml FC 5-10 µg/ml
Reactivity:	Human, Mouse, Rat
Host:	Rabbit
Isotype:	IgG
Clonality:	Polyclonal
Immunogen:	A synthetic peptide surrounding –GQYQP- without phosphorylation at tyrosine 505 of p56lck protein from human, rat, bovine, dog origin.
Formulation:	This affinity purified antibody is supplied in sterile Tris-buffered saline (pH7.2) containing antibody stabilizer.
Purification:	The Rabbit IgG is purified by Epitope Affinity Purification
Conjugation:	Unconjugated
Storage:	Store at -20°C as received.
Stability:	Stable for 12 months from date of receipt.
Predicted Protein Size:	56 kDa
Gene Name:	LCK proto-oncogene, Src family tyrosine kinase
Database Link:	<a href="#">NP_001036236</a> <a href="#">Entrez Gene 16818 Mouse</a> <a href="#">Entrez Gene 313050 Rat</a> <a href="#">Entrez Gene 3932 Human</a> <a href="#">P06239</a>
Background:	Lymphocyte specific protein tyrosine kinase (LCK) belongs to Src family protein-tyrosine kinase. It is essential for T-cell development and function. The activity p56lck is regulated by phosphorylation and dephosphorylation of two critical tyrosine residues Tyr394 and Tyr505. Tyr394 and Tyr505 are autophosphorylated after p56lck activation, whereas phosphorylation of Tyr505 is believed to be due to p50csk which negatively modulates P56lck activity. Autophosphorylation at Tyr505 of P56lck may represent an accessory mechanism for the down-regulation of the tyrosine kinase activity of P56lck.
Synonyms:	IMD22; LSK; p56lck; pp58lck; YT16

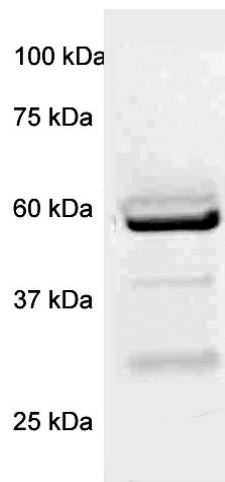


[View online »](#)

**Protein Families:** Druggable Genome, Protein Kinase, Stem cell - Pluripotency

**Protein Pathways:** Natural killer cell mediated cytotoxicity, Primary immunodeficiency, T cell receptor signaling pathway

**Product images:**



WB: The whole cell lysate derived from Jurkat was separated in 10% SDS-PAGE, transferred onto NC membrane, and immunoblotted by Rabbit anti-p56lck (paired Y505) antibody at 1:500. An immunoreactive band around ~56 kDa is observed.