

## Product datasheet for **TA354683**

### Desmin (DES) Rabbit Polyclonal Antibody

#### Product data:

Product Type:	Primary Antibodies
Applications:	IHC, WB
Recommended Dilution:	WB 0.1-1 µg/ml ELISA 0.01-0.1 µg/ml IP 2-5 µg/ml IHC 2-10 µg/ml FC 5-10 µg/ml
Reactivity:	Human, Mouse, Rat
Host:	Rabbit
Isotype:	IgG
Clonality:	Polyclonal
Immunogen:	A synthetic peptide corresponding to the C-terminus of human Desmin.
Formulation:	This affinity purified antibody is supplied in sterile Tris-buffered saline (pH7.2) containing antibody stabilizer.
Purification:	The Rabbit IgG is purified by Epitope Affinity Purification
Conjugation:	Unconjugated
Storage:	Store at -20°C as received.
Stability:	Stable for 12 months from date of receipt.
Predicted Protein Size:	~55 kDa
Gene Name:	desmin
Database Link:	<a href="#">NP_001918</a> <a href="#">Entrez Gene 13346 Mouse</a> <a href="#">Entrez Gene 64362 Rat</a> <a href="#">Entrez Gene 1674 Human</a> <a href="#">P17661</a>
Background:	Desmin is a major intermediate filament protein found exclusively in striated (skeletal or cardiac) muscle tissue. It belongs to a large family of class III intermediate filament protein, the main intermediate filamentin mature skeletal, cardiac and smooth muscle cells. Mutations in the gene encoding desmin are associated with desmin-related myopathy, a familial cardiac and skeletal myopathy (CSM), and with distal myopathies. PKC (Protein Kinase C) and cAMP-dependent protein kinase can induce disassembly of the desmin filaments by phosphorylating multiple sites at N-terminus of desmin which can affect the desmin filament structure which play a role in the regulatory process in assembly and turnover.
Synonyms:	CSM1; CSM2; LGMD2R

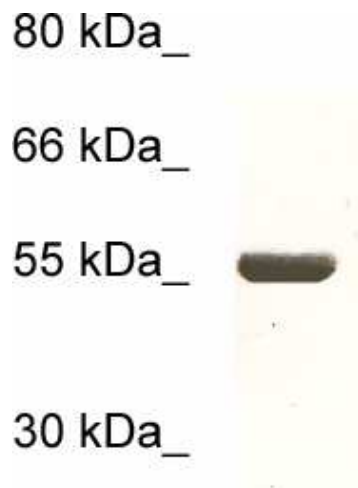


[View online »](#)

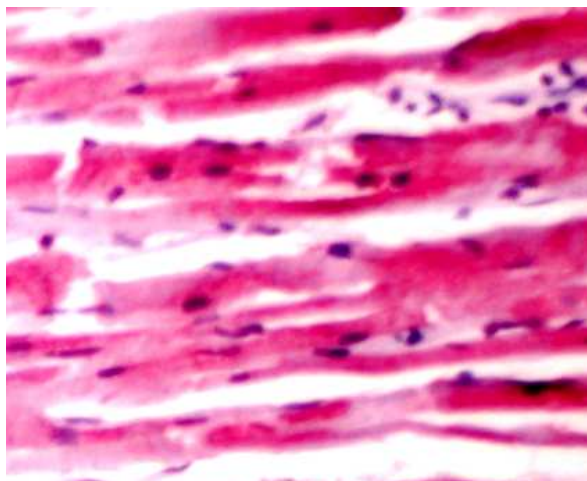
Protein Families: Druggable Genome

Protein Pathways: Arrhythmogenic right ventricular cardiomyopathy (ARVC), Dilated cardiomyopathy, Hypertrophic cardiomyopathy (HCM)

### Product images:



WB: The whole cell lysate derived from cardiac myocytes was loaded in 10% SDS-PAGE, transferred onto NC membrane, and immunoprobed by Rabbit anti-Desmin at 1:500. An immunoreactive band is observed around ~55kDa.



IHC: Human heart tissue stained with Anti-Desmin antibody, at 1:200 for 10 min at RT. Staining of formalin-fixed tissue requires boiling tissue sections in 10 mM Citrate Buffer, pH 6.0 for 10 min followed by cooling at RT for 20 min.