

Product datasheet for **TA354680**

c-Jun (JUN) Rabbit Polyclonal Antibody

Product data:

Product Type:	Primary Antibodies
Applications:	WB
Recommended Dilution:	WB 0.1-1 µg/ml ELISA 0.01-0.1 µg/ml IP 2-5 µg/ml IHC Not tested FC Not tested
Reactivity:	Human, Mouse
Host:	Rabbit
Isotype:	IgG
Clonality:	Polyclonal
Immunogen:	synthetic peptide corresponding to the epitope –GETPP-at a phosphorylation site Thr 239 of human c-Jun protein. This sequence is identical within human, rat, mouse, bovine and dog.
Formulation:	This affinity purified antibody is supplied in sterile Tris-buffered saline (pH7.2) containing antibody stabilizer.
Purification:	The Rabbit IgG is purified by site-modified Epitope Affinity Purification.
Conjugation:	Unconjugated
Storage:	Store at -20°C as received.
Stability:	Stable for 12 months from date of receipt.
Predicted Protein Size:	48 kDa
Gene Name:	Jun proto-oncogene, AP-1 transcription factor subunit
Database Link:	NP_002219 Entrez Gene 16476 Mouse Entrez Gene 3725 Human P05412



[View online »](#)

Background:

c-Jun, also known as AP1, v-Jun or AH119, is a component of the transcription factor AP-1, which binds and activates transcription at TRE/AP-1 elements. The transcriptional activity of c-Jun is regulated by phosphorylation at Ser63 and Ser73 as well as Thr 91 and Thr93. Extracellular signals including growth factors, transforming oncoproteins and UV irradiation stimulate phosphorylation of c-Jun at Ser63/73 and activate c-Jun-dependent transcription. The MAP kinase homologue SAPK/JNK binds to the amino-terminal region of c-Jun and phosphorylates c-Jun at Ser63/73 and Thr91/93. The phosphorylation of Thr239 is catalysed by The inhibition of GSK3 is not required for the dephosphorylation of Thr239 in response to LPS, and nor is the phosphorylation of Thr91 and Thr93 required for the TPA- or EGF-induced dephosphorylation of Thr239 in fibroblasts. The agonist-induced dephosphorylation of Thr239 may involve a conformational change that exposes Thr239 to dephosphorylation and/or the activation of a Thr239 phosphatase.

Synonyms:

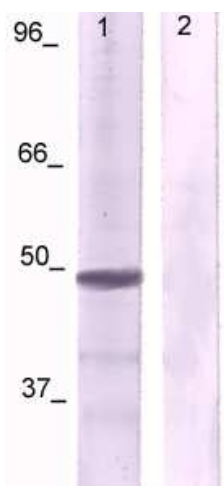
AP-1; AP1; c-Jun

Protein Families:

Druggable Genome, ES Cell Differentiation/IPS, Transcription Factors

Protein Pathways:

B cell receptor signaling pathway, Colorectal cancer, Epithelial cell signaling in Helicobacter pylori infection, ErbB signaling pathway, Focal adhesion, GnRH signaling pathway, MAPK signaling pathway, Neurotrophin signaling pathway, Pathways in cancer, Renal cell carcinoma, T cell receptor signaling pathway, Toll-like receptor signaling pathway, Wnt signaling pathway

Product images:

WB: The cell lysate derived from UV treated 3T3 cells was immunoprobed by Rabbit anti-c-Jun (pT239) antibody at 1:500. An immunoreactive band is observed around ~48kDa (lane 1). This band is blocked by preincubation with immunizing peptide (Lane 2)