

## Product datasheet for **TA354678**

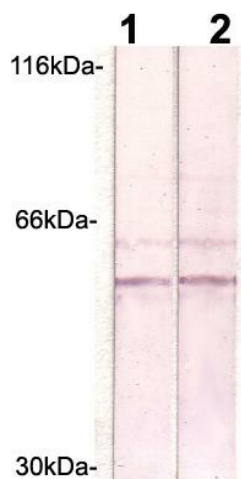
### LSP1 Rabbit Polyclonal Antibody

#### Product data:

Product Type:	Primary Antibodies
Applications:	WB
Recommended Dilution:	WB 0.1-1 µg/ml ELISA 0.01-0.1 µg/ml IP 2-5 µg/ml IHC 2-10 µg/ml FC 5-10 µg/ml
Reactivity:	Human, Mouse, Rat
Host:	Rabbit
Isotype:	IgG
Clonality:	Polyclonal
Formulation:	This affinity purified antibody is supplied in sterile Tris-buffered saline (pH7.2) containing antibody stabilizer.
Purification:	The Rabbit IgG is purified by Epitope Affinity Purification
Conjugation:	Unconjugated
Storage:	Store at -20°C as received.
Stability:	Stable for 12 months from date of receipt.
Predicted Protein Size:	~52 kDa
Gene Name:	lymphocyte-specific protein 1
Database Link:	<a href="#">NP_001013271</a> <a href="#">Entrez Gene 16985 MouseEntrez Gene 361680 RatEntrez Gene 4046 Human P33241</a>
Synonyms:	pp52; WP34



[View online »](#)

**Product images:**

WB: The whole cell lysate derived from Jurket cells (lane 1) or mouse spleen (Lane 2) were immune-probed by Rabbit anti-LSP1 (Paired S190) at 1:500. An immunoreactive band is observed around ~52kDa.