

Product datasheet for **TA354674**

IKB alpha (NFKBIA) Rabbit Polyclonal Antibody

Product data:

Product Type:	Primary Antibodies
Applications:	WB
Recommended Dilution:	WB 0.1-1 µg/ml ELISA 0.01-0.1 µg/ml IP 2-5 µg/ml IHC 2-10 µg/ml FC 5-10 µg/ml
Reactivity:	Human, Mouse, Rat
Host:	Rabbit
Isotype:	IgG
Clonality:	Polyclonal
Immunogen:	A synthetic peptide corresponding to the epitope -DSGLDSM- at dual phosphorylation sites serine 32 and serine 36 of human IκBα protein. This sequence is identical within human, mouse, rat, dog and bovine.
Formulation:	This affinity purified antibody is supplied in sterile Tris-buffered saline (pH7.2) containing antibody stabilizer.
Purification:	The Rabbit IgG is purified by site-modified Epitope Affinity Purification.
Conjugation:	Unconjugated
Storage:	Store at -20°C as received.
Stability:	Stable for 12 months from date of receipt.
Predicted Protein Size:	~42 kDa
Gene Name:	NFKB inhibitor alpha
Database Link:	NP_065390 Entrez Gene 18035 MouseEntrez Gene 25493 RatEntrez Gene 4792 Human P25963
Background:	There are six members in the IκB family, in which IκBa is first protein induced by NF-κB activation. NF-κB is silenced in the cytoplasm by an inhibitory protein, IκB. Synthesis of IκBa is autoregulated. IκB proteins are phosphorylated by IκB kinase complex consisting of at least three proteins, IKK1/a, IKK2/b, and IKK3/g. External stimuli such as TNF or other cytokines initiates a signal transduction cascade that leads to the activation of IκB-kinase complex that specifically phosphorylates IκBa on Serine-32 and Serine-36. Phosphorylation of these sites leads to ubiquitination of IκBa and subsequent degradation by the 26 S proteasome.



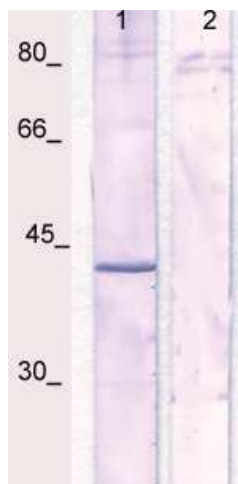
[View online »](#)

Synonyms: IKBA; MAD-3; NFKBI

Protein Families: Druggable Genome

Protein Pathways: Adipocytokine signaling pathway, Apoptosis, B cell receptor signaling pathway, Chemokine signaling pathway, Chronic myeloid leukemia, Cytosolic DNA-sensing pathway, Epithelial cell signaling in Helicobacter pylori infection, Neurotrophin signaling pathway, NOD-like receptor signaling pathway, Pathways in cancer, Prostate cancer, RIG-I-like receptor signaling pathway, Small cell lung cancer, T cell receptor signaling pathway, Toll-like receptor signaling pathway

Product images:



WB: The whole cell lysate derived from TNF α -treated Jurkat cells was immunoblotted by Rabbit anti-phosphoIKBa (pS32/S36) at 1:500. An immune-reactive band is observed around ~42kDa (lane 1). This band is blocked by pre-incubation of immunizing peptide (lane 2)