

Product datasheet for **TA354666**

PTEN Rabbit Polyclonal Antibody

Product data:

Product Type:	Primary Antibodies
Applications:	Dot, WB
Recommended Dilution:	WB 0.1-1 µg/ml ELISA 0.01-0.1 µg/ml IP 2-5 µg/ml IHC 2-10 µg/ml FC 5-10 µg/ml
Reactivity:	Human, Mouse, Rat
Host:	Rabbit
Isotype:	IgG
Clonality:	Polyclonal
Immunogen:	A synthetic peptide surrounding to the epitope -DTSDP—without a phosphorylation site at Ser385 of human PTEN protein. This sequence is identical among human, mouse, rat, bovine and chicken origins.
Formulation:	This affinity purified antibody is supplied in sterile Tris-buffered saline (pH7.2) containing antibody stabilizer.
Purification:	The Rabbit IgG is purified by Epitope Affinity Purification
Conjugation:	Unconjugated
Storage:	Store at -20°C as received.
Stability:	Stable for 12 months from date of receipt.
Predicted Protein Size:	58 kDa
Gene Name:	phosphatase and tensin homolog
Database Link:	NP_000305 Entrez Gene 19211 MouseEntrez Gene 50557 RatEntrez Gene 5728 Human P60484
Background:	The phosphatase and tensin homologue (PTEN) tumor suppressor is a phosphatidylinositol D3-phosphatase that is frequently mutated in tumor cells. PTEN is itself regulated by phosphorylation on multiple serine and threonine residues in its C terminus. Casein kinase 2 (CK2) and Glycogen synthase kinase 3beta (GSK3beta), ATK/PI3K are involved in PTEN phosphorylation at sites of S370, S380, T382, T383, S385. The PTEN phosphorylation may play critical roles in the tumor suppressor functions.
Synonyms:	10q23del; BZS; CWS1; DEC; GLM2; MHAM; MMAC1; PTEN1; TEP1

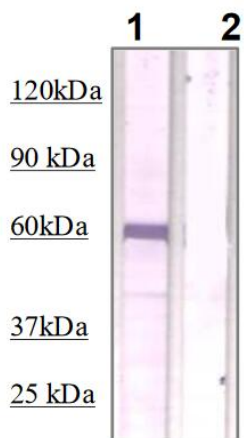


[View online »](#)

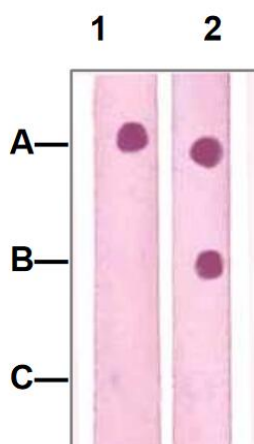
Protein Families: Druggable Genome, Phosphatase

Protein Pathways: Endometrial cancer, Focal adhesion, Glioma, Inositol phosphate metabolism, Melanoma, p53 signaling pathway, Pathways in cancer, Phosphatidylinositol signaling system, Prostate cancer, Small cell lung cancer, Tight junction

Product images:



WB: The mouse brain tissue lysate resolved onto 10% SDS-PAGE, transferred onto NC membrane, and followed by an immunoblotting with Rabbit anti-PTEN (Paired S385) antibody (Lane 1) at 1:500, or with a pre-incubation of immunizing peptide (lane 2)



DB: 1 ug peptide was blot onto NC membrane A: PTEN (pS385) (Phosphospecific) B: PTEN (Paired S385) (Non phosphospecific) C: Non-related phosphospecific peptide were blotted at a 1:2000 dilution by: 1: Rabbit anti-PTEN (pS385) (Phosphospecific), 2: Rabbit anti-PTEN (Paired) (NonPhospho specific).