

## Product datasheet for **TA354664**

### MCSF Receptor (CSF1R) Rabbit Polyclonal Antibody

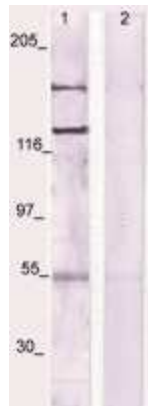
#### Product data:

Product Type:	Primary Antibodies
Applications:	WB
Recommended Dilution:	WB 0.1-1 µg/ml ELISA 0.01-0.1 µg/ml IP 2-5 µg/ml IHC 2-10 µg/ml FC 5-10 µg/ml
Reactivity:	Human, Mouse, Rat
Host:	Rabbit
Isotype:	IgG
Clonality:	Polyclonal
Immunogen:	A synthetic peptide corresponding to the C-terminus of human CSF-1R protein. This sequence is identical within human, mouse, rat, and bovine.
Formulation:	This affinity purified antibody is supplied in sterile Tris-buffered saline (pH7.2) containing antibody stabilizer.
Purification:	The Rabbit IgG is purified by Epitope Affinity Purification
Conjugation:	Unconjugated
Storage:	Store at -20°C as received.
Stability:	Stable for 12 months from date of receipt.
Predicted Protein Size:	~130 kDa
Gene Name:	colony stimulating factor 1 receptor
Database Link:	<a href="#">NP_001275634</a> <a href="#">Entrez Gene 12978 Mouse</a> <a href="#">Entrez Gene 307403 Rat</a> <a href="#">Entrez Gene 1436 Human</a> <a href="#">P07333</a>



[View online »](#)

<b>Background:</b>	CD115, or Colony-stimulating factor-1 receptor (CSF-1R), is the major regulator of macrophage development and associated with epithelial cancers of the breast and ovary. CSF-1R is a disulfide-linked homodimer, which upon binding of its ligand, CSF-1, undergoes tyrosine autophosphorylation and subsequently, phosphorylates other membrane-proximal downstream targets which results in cytoskeletal remodeling, gene transcription and protein translation. The activated or phosphorylated form of CSF-1R has been associated with enhanced invasive and metastatic potential. The phosphorylation residues include Tyr 708, Tyr 723, Tyr 809 which correlate CSF-1R expression with changes in the growth and development of the cancer stage.
<b>Synonyms:</b>	C-FMS; CD115; CSF-1R; CSFR; FIM2; FMS; HDLS; M-CSF-R
<b>Protein Families:</b>	Druggable Genome, Protein Kinase, Transmembrane
<b>Protein Pathways:</b>	Cytokine-cytokine receptor interaction, Endocytosis, Hematopoietic cell lineage, Pathways in cancer

**Product images:**

WB: The whole cell lysate derived from LNCaP was immunoblotted by Rabbit anti-CSF-1R at 1:500. A major immunoreactive band is observed around ~130kDa (lane 1). This band is blocked by pre-incubation of immunizing peptide (lane 2)