

Product datasheet for **TA354662**

MCSF Receptor (CSF1R) Rabbit Polyclonal Antibody

Product data:

Product Type:	Primary Antibodies
Applications:	WB
Recommended Dilution:	WB 0.1-1 µg/ml ELISA 0.01-0.1 µg/ml IP 2-5 µg/ml IHC 2-10 µg/ml FC 5-10 µg/ml
Reactivity:	Human, Mouse, Rat
Host:	Rabbit
Isotype:	IgG
Clonality:	Polyclonal
Immunogen:	A synthetic peptide corresponding to the epitope -DTYVEM- at a phosphorylation site at tyrosine 723 of human CSF-1R protein. This sequence is identical within human, mouse, rat, and bovine.
Formulation:	This affinity purified antibody is supplied in sterile Tris-buffered saline (pH7.2) containing antibody stabilizer.
Purification:	The Rabbit IgG is purified by site-modified Epitope Affinity Purification.
Conjugation:	Unconjugated
Storage:	Store at -20°C as received.
Stability:	Stable for 12 months from date of receipt.
Predicted Protein Size:	~150 kDa (Phosphorylated form)
Gene Name:	colony stimulating factor 1 receptor
Database Link:	NP_001275634 Entrez Gene 12978 MouseEntrez Gene 307403 RatEntrez Gene 1436 Human P07333



[View online »](#)

Background:

CD115, or Colony-stimulating factor-1 receptor (CSF-1R), is the major regulator of macrophage development and associated with epithelial cancers of the breast and ovary. CSF-1R is a disulfide-linked homodimer, which upon binding of its ligand, CSF-1, undergoes tyrosine autophosphorylation and subsequently, phosphorylates other membrane-proximal downstream targets which results in cytoskeletal remodeling, gene transcription and protein translation. The activated or phosphorylated form of CSF-1R has been associated with enhanced invasive and metastatic potential. The phosphorylation residues include Tyr 708, Tyr 723, Tyr 809 which correlate CSF-1R expression with changes in the growth and development of the cancer stage.

Synonyms:

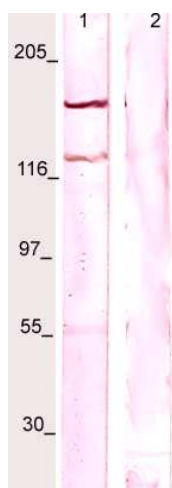
C-FMS; CD115; CSF-1R; CSFR; FIM2; FMS; HDLS; M-CSF-R

Protein Families:

Druggable Genome, Protein Kinase, Transmembrane

Protein Pathways:

Cytokine-cytokine receptor interaction, Endocytosis, Hematopoietic cell lineage, Pathways in cancer

Product images:

WB: The whole cell lysate derived from m-CSF stimulated LNCaP was immunoblotted by Rabbit anti-CSF-1R (pY723) at 1:500. A major immune-reactive band is observed around ~150kDa (lane 1). This band is blocked by pre-incubation of immunizing peptide (lane 2)