

## Product datasheet for **TA354659**

### VEGF Receptor 2 (KDR) Rabbit Polyclonal Antibody

#### Product data:

Product Type:	Primary Antibodies
Applications:	WB
Recommended Dilution:	WB 0.1-1 µg/ml ELISA 0.01-0.1 µg/ml IP 2-5 µg/ml IHC 2-10 µg/ml FC 5-10 µg/ml
Reactivity:	Human, Mouse, Rat
Host:	Rabbit
Isotype:	IgG
Clonality:	Polyclonal
Immunogen:	A synthetic peptide corresponding to the epitope -KDYVG- at a phosphorylation site at tyrosine 951 of human VEGFR-2 protein. This sequence is identical within human, mouse and dog.
Formulation:	This affinity purified antibody is supplied in sterile Tris-buffered saline (pH7.2) containing antibody stabilizer.
Purification:	The Rabbit IgG is purified by site-modified Epitope Affinity Purification.
Conjugation:	Unconjugated
Storage:	Store at -20°C as received.
Stability:	Stable for 12 months from date of receipt.
Predicted Protein Size:	~240 kDa
Gene Name:	kinase insert domain receptor
Database Link:	<a href="#">NP_002244</a> <a href="#">Entrez Gene 16542 MouseEntrez Gene 25589 RatEntrez Gene 3791 Human P35968</a>
Background:	Vascular endothelial growth factor receptor-2 (VEGFR-2), also known as CD309 antigen, the earliest known marker for vascular endothelia cells, is essential in vasculogenesis and angiogenesis. Binding of the dimeric VEGF-A to the extracellular domains of two monomeric receptors induces dimerization and activation of tyrosine kinase at tyrosine residues Y951, Y1054 and Y1059 in the kinase domain serve as positive regulatory sites. Phosphorylation at Y951 of the kinase insert is related to the migration of endothelial cells for tumor vascularization and growth.



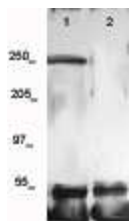
[View online »](#)

**Synonyms:** CD309; FLK1; VEGFR; VEGFR2

**Protein Families:** Druggable Genome, ES Cell Differentiation/IPS, Protein Kinase, Transmembrane

**Protein Pathways:** Cytokine-cytokine receptor interaction, Endocytosis, Focal adhesion, VEGF signaling pathway

**Product images:**



WB: The whole cell lysate derived from human umbilical vein endothelial cell was stimulated by VEGF-A for 20 min, then immunoprecipitated by Rabbit anti-VEGFR2 followed by immunoprobng with Rabbit anti-phosphor-VEGFR2 (pY951) at 1:500. An immunoreactive band is observed around ~240kDa (lane 1). The lane 2 is a negative control.