

Product datasheet for **TA354640**

RON (MST1R) Rabbit Polyclonal Antibody

Product data:

Product Type:	Primary Antibodies
Applications:	Dot, WB
Recommended Dilution:	WB 0.1-1 µg/ml ELISA 0.01-0.1 µg/ml IP 2-5 µg/ml IHC 2-10 µg/ml FC 5-10 µg/ml
Reactivity:	Human
Host:	Rabbit
Isotype:	IgG
Clonality:	Polyclonal
Immunogen:	A synthetic peptide containing the epitope -EPYYS- with a dually phosphorylation sites Y1238/9 of the human CD136.
Formulation:	This affinity purified antibody is supplied in sterile Tris-buffered saline (pH7.2) containing antibody stabilizer.
Purification:	The Rabbit IgG is purified by site-modified Epitope Affinity Purification.
Conjugation:	Unconjugated
Storage:	Store at -20°C as received.
Stability:	Stable for 12 months from date of receipt.
Predicted Protein Size:	185 kDa
Gene Name:	macrophage stimulating 1 receptor
Database Link:	NP_001231866 Entrez Gene 4486 Human Q04912



[View online »](#)

Background:

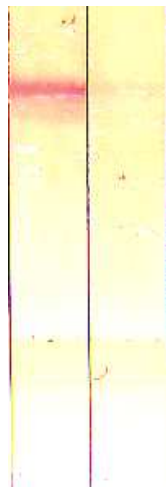
CD136, a transmembrane receptor tyrosine kinase, also known as Macrophage stimulating 1 receptor (MST1R) and RON (Recepteur d'origine nantais), is a member of the MET proto-oncogene family (63% homology), and is the receptor for macrophage-stimulating protein (MSP), a multifunctional cytokine that regulates cell adhesion, motility, growth, and survival. Binding of MSP to CD136 stimulates tyrosine phosphorylation on Tyr 1238 and Tyr 1239. This phosphorylation leads to a up-regulation of CD136 catalytic activity and subsequent activation of downstream signaling molecules. In addition, CD136 contains putative autophosphorylation sites on Tyr 1353 and Tyr 1360. RON mediates multiple signaling cascades, such as MAPK, PI3K/AKT, FAK pathways. CD136 activation can also significantly increase C-Src activity. CD136 is a disulfide-linked 180kD heterodimer composed of a 35kD alpha chain and a 150kD beta chain, and is mainly expressed in cells of epithelial origin. CD136 is thought to play a role in early embryonic development and in the inflammatory response as well as implicated in the progression and metastasis of tumors including those of the breast and colon.

Synonyms:

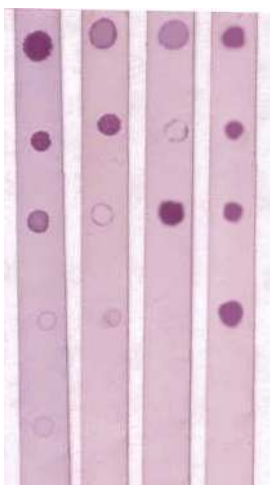
CD136; CDw136; PTK8; RON

Protein Families:

Druggable Genome, ES Cell Differentiation/IPS, Protein Kinase, Transmembrane

Product images:

WB: The cell lysate derived from MSP-treated CD136 transfected HEK293 were immunoprobed by Rabbit anti-CD136 (pY1238/Y1239) at 1:500. An immunoreactive band is observed around ~185kDa (lane 1). This band is blocked by immunizing peptide (lane 2).



DB: 1 ug peptide was blot onto NC membrane A: CD136 (pY1238/Y1239) B: CD136 (pY1238) C: CD136 (pY1239) D: CD136 (Nonphospho); E: Non-related Phosphopeptide) were blotted at a 1:2000 dilution by: 1: Rabbit anti-CD136 (pY1238/Y1239), ; 2: Rabbit anti-CD136 (pY1238), ; 3: Rabbit anti-CD136 (pY1239), ; 4: Rabbit anti-CD136,