

Product datasheet for **TA354627**

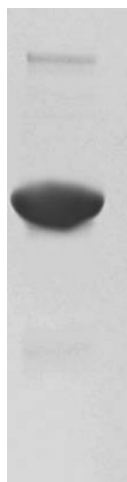
TF Rabbit Polyclonal Antibody

Product data:

Product Type:	Primary Antibodies
Applications:	WB
Recommended Dilution:	WB 0.1-1 µg/ml ELISA 0.01-0.1 µg/ml IP 2-5 µg/ml IHC 2-10 µg/ml FC 5-10 µg/ml
Reactivity:	Human
Host:	Rabbit
Isotype:	IgG
Clonality:	Polyclonal
Immunogen:	A synthetic peptide close to C-terminus of chicken egg white Ovotransferrin protein
Formulation:	This affinity purified antibody is supplied in sterile Phosphate buffered saline (pH7.2) containing antibody stabilizer.
Purification:	The Rabbit IgG is purified by Epitope Affinity Purification
Conjugation:	Unconjugated
Storage:	Store at -20°C as received.
Stability:	Stable for 12 months from date of receipt.
Predicted Protein Size:	~80 kDa
Background:	Ovotransferrin is a 705 aa, monomeric, glycosylated, 80 kDa protein isolated from chicken egg white. It is involved in response to oxidative stress in embryogenesis to maintain a steady reducing environment (known as confer protection). Ovotransferrin is the second major protein in egg albumin, undergoes autocleavage at distinct sites upon reduction with thiol-reducing system. The major proteins of chicken eggs are: Ovalbumin (45 kda, 54%), Conalbumin/Ovotransferrin (13%, 80 kda), Ovomuroid (11%, 28 kda), Lysozyme (3.5%, 14 kda), and other proteins.



[View online »](#)

Product images:

WB: The highly purified Ovotransferrin from chicken egg white was immunoblotted by Rabbit anti-Ovotransferrin antibody at 1:500. An immunoreactive band is observed at ~80 kDa.