

## Product datasheet for **TA354613**

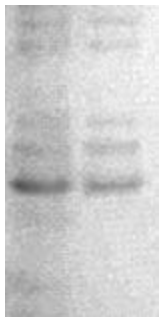
### CDC25C Rabbit Polyclonal Antibody

#### Product data:

Product Type:	Primary Antibodies
Applications:	WB
Recommended Dilution:	WB 0.1-1 µg/ml ELISA 0.01-0.1 µg/ml IP 2-5 µg/ml IHC 2-10 µg/ml FC 5-10 µg/ml
Reactivity:	Human
Host:	Rabbit
Isotype:	IgG
Clonality:	Polyclonal
Formulation:	This affinity purified antibody is supplied in sterile Tris-buffered saline (pH7.2) containing antibody stabilizer.
Purification:	The Rabbit IgG is purified by site-modified Epitope Affinity Purification.
Conjugation:	Unconjugated
Storage:	Store at -20°C as received.
Stability:	Stable for 12 months from date of receipt.
Predicted Protein Size:	~60 kDa
Gene Name:	cell division cycle 25C
Database Link:	<a href="#">NP_001274511</a> <a href="#">Entrez Gene 995 Human</a> <a href="#">P30307</a>
Synonyms:	CDC25; PPP1R60
Protein Families:	Druggable Genome, Phosphatase, Stem cell - Pluripotency
Protein Pathways:	Cell cycle, Oocyte meiosis, Progesterone-mediated oocyte maturation



[View online »](#)

**Product images:**

WB: The cell lysate derived from Rapamycin (100nM) stimulated Hela was immunoblotted by Rabbit anti-CDC25C (pS216) at 1:500. An immunoreactive band is observed ~60 kDa.