

Product datasheet for **TA354600**

SOX6 Rabbit Polyclonal Antibody

Product data:

Product Type:	Primary Antibodies
Applications:	WB
Recommended Dilution:	WB 0.1-1 µg/ml ELISA 0.01-0.1 µg/ml IP 2-5 µg/ml IHC 2-10 µg/ml FC 5-10 µg/ml
Reactivity:	Human, Rat, Mouse
Host:	Rabbit
Isotype:	IgG
Clonality:	Polyclonal
Immunogen:	A synthetic peptide corresponding to the Internal sequence (from 80aa-120aa) of human SOX14 protein. This sequence is identical in human, mouse and rat species.
Formulation:	This affinity purified antibody is supplied in sterile Phosphate buffered saline (pH7.2) containing antibody stabilizer.
Purification:	The Rabbit IgG is purified by Epitope Affinity Purification
Conjugation:	Unconjugated
Storage:	Store at -20°C as received.
Stability:	Stable for 12 months from date of receipt.
Predicted Protein Size:	~94 kDa
Gene Name:	SRY-box 6
Database Link:	NP_001139283 Entrez Gene 20679 Mouse Entrez Gene 293165 Rat Entrez Gene 55553 Human P35712



[View online »](#)

Background:

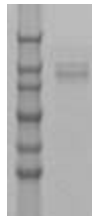
Members of the SOX gene family encode proteins with homology to the HMG box DNA-binding domain of SRY, the Y-linked testis-determining gene. SOX genes are expressed during embryogenesis and are involved in the development of a wide range of different tissues. Mutations in SRY, SOX9 and SOX10 have been shown to be responsible for XY sex reversal, campomelic dysplasia and Waardenburg-Hirschsprung disease, respectively. It is likely that mutations in other SOX genes are responsible for a variety of human genetic diseases. SOX14 has been identified from a human genomic library and the mouse and chicken sequences obtained by polymerase chain reaction amplification. The SOX14 amino acid sequence is highly conserved across these species, suggesting an important role for this protein in vertebrate development. SOX14 is expressed in the neural tube and apical ectodermal ridge of the developing chicken limb. The SOX14 is associated to limb defects.

Synonyms:

HSSOX6; SOXD

Protein Families:

Transcription Factors

Product images:

WB: The whole tissue lysate derived from Mouse embryos was separated in 10% SDS-PAGE, transferred onto NC membrane, and immunoblotted by Rabbit anti-SOX6 antibody at 1:500. An immunoreactive band around ~94 kDa was observed.