

Product datasheet for **TA354598**

SOX3 Rabbit Polyclonal Antibody

Product data:

Product Type:	Primary Antibodies
Applications:	WB
Recommended Dilution:	WB 0.1-1 µg/ml ELISA 0.01-0.1 µg/ml IP 2-5 µg/ml IHC 2-10 µg/ml FC 5-10 µg/ml
Reactivity:	Human
Host:	Rabbit
Isotype:	IgG
Clonality:	Polyclonal
Immunogen:	A synthetic peptide derived from N-terminus of Human SOX-3 protein.
Formulation:	This affinity purified antibody is supplied in sterile Phosphate buffered saline (pH7.2) containing antibody stabilizer.
Purification:	The Rabbit IgG is purified by Epitope Affinity Purification
Conjugation:	Unconjugated
Storage:	Store at -20°C as received.
Stability:	Stable for 12 months from date of receipt.
Predicted Protein Size:	45 kDa
Gene Name:	SRY-box 3
Database Link:	NP_005625 Entrez Gene 6658 Human P41225



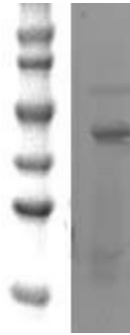
[View online »](#)

Background:

The SOX3, a protein transcription factor, belongs to a member of the SRY-related HMG-box (SOX) family. SOX3 is 447 aa protein which has diverse roles in development. The SOX3 gene is involved in a large family in which affected individuals have mental retardation and growth hormone deficiency. The mutation results in an in-frame duplication of 33 bp encoding for 11 alanines in a polyalanine tract of the SOX3 gene. The expression pattern during neural and pituitary development suggests that dysfunction of the SOX3 protein caused by the polyalanine expansion might disturb transcription pathways and the regulation of genes involved in cellular processes and functions required for cognitive and pituitary development. SOX3 is expressed in the central nervous system from the earliest stages of development. It is one of the earliest neural markers in vertebrates and plays a role in specifying neuronal fate.

Synonyms:

GHDX; MRGH; PHP; PHPX; SOXB

Product images:

WB: The whole cell lysate derived from neuron stem cell (NE-4C) was immunoblotted by Rabbit anti-SOX-3 at 1:500. An immunoreactive protein band was observed around 46kDa.