

Product datasheet for **TA354597**

SOX2 Rabbit Polyclonal Antibody

Product data:

Product Type:	Primary Antibodies
Applications:	IHC, WB
Recommended Dilution:	WB 0.1-1 µg/ml ELISA 0.01-0.1 µg/ml IP 2-5 µg/ml IHC 2-10 µg/ml FC 5-10 µg/ml
Reactivity:	Human, Mouse, Rat, Chicken, Bovine, Canis
Host:	Rabbit
Isotype:	IgG
Clonality:	Polyclonal
Immunogen:	A synthetic peptide derived from N-terminus of Human SOX-2 protein. This sequence is identical among human, rat, mouse, bovine, chicken, and dog.
Formulation:	This affinity purified antibody is supplied in sterile Phosphate buffered saline (pH7.2) containing antibody stabilizer.
Purification:	The Rabbit IgG is purified by Epitope Affinity Purification
Conjugation:	Unconjugated
Storage:	Store at -20°C as received.
Stability:	Stable for 12 months from date of receipt.
Predicted Protein Size:	35 kDa
Gene Name:	SRY-box 2
Database Link:	NP_003097 Entrez Gene 20674 MouseEntrez Gene 499593 RatEntrez Gene 6657 Human P48431
Background:	The SOX2 is a transcription factor, a member of the SRY-related HMG-box (SOX) family involved in the regulation of embryonic development and in the determination of cell fate. Mutations in this gene have been associated with bilateral anophthalmia, a severe form of structural eye malformation. When SOX-2 is expressed in self-renewing progenitor cells, it acts to inhibit neuronal differentiation. Sox-2 is considered as an appropriate cell-specific marker in vivo dynamics of the neural progenitor cell compartment as well as in the adult
Synonyms:	ANOP3; MCOPS3



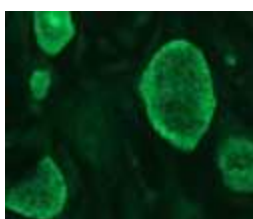
[View online »](#)

Protein Families: Adult stem cells, Cancer stem cells, Embryonic stem cells, ES Cell Differentiation/IPS, Induced pluripotent stem cells, Transcription Factors

Product images:



WB: The whole cell lysate derived from embryonic mouse brain immunoblotted by Rabbit anti-SOX-2 at 1:500



IHC: mouse stem cells was stained by Rabbit anti-SOX-2 at 1:250, and visualized by FITClabeled anti-Rabbit IgG. The nuclear staining is observed.