

## Product datasheet for **TA354592**

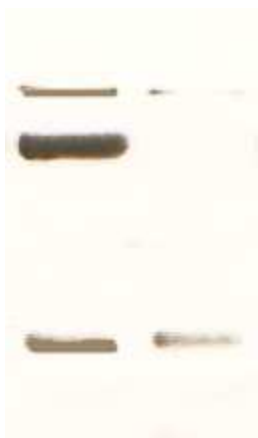
### Oct-1 (POU2F1) Rabbit Polyclonal Antibody

#### Product data:

Product Type:	Primary Antibodies
Applications:	Dot, WB
Recommended Dilution:	WB 0.1-1 µg/ml ELISA 0.01-0.1 µg/ml IP 2-5 µg/ml IHC 2-10 µg/ml FC 5-10 µg/ml
Reactivity:	Human
Host:	Rabbit
Isotype:	IgG
Clonality:	Polyclonal
Immunogen:	A synthetic peptide corresponding to C-terminus of OCT-1 protein from human, mouse and rat origins.
Formulation:	This affinity purified antibody is supplied in sterile Phosphate buffered saline (pH7.2) containing antibody stabilizer.
Purification:	The Rabbit IgG is purified by Epitope Affinity Purification
Conjugation:	Unconjugated
Storage:	Store at -20°C as received.
Stability:	Stable for 12 months from date of receipt.
Predicted Protein Size:	89 kDa
Gene Name:	POU class 2 homeobox 1
Database Link:	<a href="#">NP_001185712</a> <a href="#">Entrez Gene 5451 Human</a> <a href="#">P14859</a>
Background:	Oct -1, a member of POU transcription factors, was identified as a DNA-binding protein that activates gene transcription via a cis-element containing an Octamer motif ATGCAAAT. It is expressed in embryonic stem (ES) cells and germ cells, and its expression is required to sustain cell self-renewal and pluripotency. Oct-3/4 is the most recognized marker for totipotent ES cells.
Synonyms:	oct-1B; OCT1; OTF1
Protein Families:	Druggable Genome, Transcription Factors



[View online »](#)

**Product images:**

WB: The tissue lysate derived from mouse kidney was immunoprobed by Rabbit anti-OCT-1 at 1:500. An immunoreactive band is observed around ~89 kDa (1). This band is abolished by preincubation with immunizing peptide (2).



DB: 1 ug peptides was blotted onto NC membrane A: OCT-1 B: OCT-2 C: OCT-4 Followed by immunoblotting at a 1:1000 dilution by: 1: Rabbit anti-OCT-1 2: Rabbit anti-OCT-2 3: Rabbit anti-OCT-4 (601-450)