

Product datasheet for **TA354578**

BNP (NPPB) Rabbit Polyclonal Antibody

Product data:

| | |
|-------------------------|--|
| Product Type: | Primary Antibodies |
| Applications: | WB |
| Recommended Dilution: | WB 0.1-1 µg/ml ELISA 0.01-0.1 µg/ml IP 2-5 µg/ml IHC 2-10 µg/ml FC 5-10 µg/ml |
| Reactivity: | Human |
| Host: | Rabbit |
| Isotype: | IgG |
| Clonality: | Polyclonal |
| Immunogen: | A 10 aa synthetic peptide derived from internal sequence of human BNP protein. |
| Formulation: | This affinity purified antibody is supplied in sterile Phosphate buffered saline (pH7.2) containing antibody stabilizer. |
| Purification: | The Rabbit IgG is purified by Epitope Affinity Purification |
| Conjugation: | Unconjugated |
| Storage: | Store at -20°C as received. |
| Stability: | Stable for 12 months from date of receipt. |
| Predicted Protein Size: | ~18 kDa |
| Gene Name: | natriuretic peptide B |
| Database Link: | NP_002512 Entrez Gene 4879 Human P16860 |



[View online »](#)

Background:

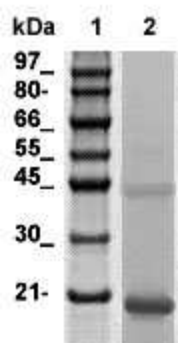
Brain natriuretic peptide (BNP) circulates in blood as a peptide hormone with natriuretic, vasodilatory and renin inhibitory properties. BNP is secreted predominantly by the left ventricular myocytes in response to volume expansion and pressure overload. BNP belongs to a family of structurally similar peptide hormones, which includes atrial natriuretic peptide (ANP), BNP, C-type natriuretic peptide (CNP) and urodilatin. These peptides are characterized by a common 17 amino acid ring structure with a disulfide bond between two cystein residues. This ring structure shows high homology between different natriuretic peptides. BNP is a 32 amino acid peptide with disulfide bond between the cystein residues Cys10 and Cys26. In earlier studies it has been demonstrated that BNP concentration in blood increases with the severity of congestive heart failure. Quantitative measurement of BNP in blood provides an objective indicator of congestive heart failure severity

Synonyms:

BNP

Protein Families:

Druggable Genome, Secreted Protein, Stem cell - Pluripotency

Product images:

WB: the 134 aa of human BNP recombinant protein was resolved onto 12% SDS-PAGE, transferred onto NC membrane, and immunoblotted by Rabbit anti-BNP antibody at 1:500. An immunoreactive band around ~18 kDa was observed.