

Product datasheet for **TA354577**

S6K1 (RPS6KB1) Rabbit Polyclonal Antibody

Product data:

Product Type:	Primary Antibodies
Applications:	WB
Recommended Dilution:	WB 0.1-1 µg/ml ELISA 0.01-0.1 µg/ml IP 2-5 µg/ml IHC 2-10 µg/ml FC 5-10 µg/ml
Reactivity:	Human, Rat, Mouse
Host:	Rabbit
Isotype:	IgG
Clonality:	Polyclonal
Immunogen:	A synthetic peptide corresponding to the C-terminus of human p70S6K protein. This sequence is identical within human, rat, mouse, bovine, chicken and dog.
Formulation:	This affinity purified antibody is supplied in sterile Phosphate buffered saline (pH7.2) containing antibody stabilizer.
Purification:	The Rabbit IgG is purified by Epitope Affinity Purification
Conjugation:	Unconjugated
Storage:	Store at -20°C as received.
Stability:	Stable for 12 months from date of receipt.
Predicted Protein Size:	70 kDa
Gene Name:	ribosomal protein S6 kinase B1
Database Link:	NP_001258971 Entrez Gene 72508 Mouse Entrez Gene 83840 Rat Entrez Gene 6198 Human P23443
Background:	S6 kinase, or p70 S6 Kinase, a mitogen activated Ser/Thr protein kinase, is required for cell growth and G1 cell cycle progression. P70 S6 Kinase and single 4E-BP are phosphorylated via the insulin and target of rapamycin (TOR) signaling pathway which is independent of PI3K and AKT activity. On the other hand, the oncogenic transformation by P3k and Akt is dependent on targets that control translation: transforming activity, which is correlated with phosphorylation and activation of S6K and eliminated by the mTOR inhibitor rapamycin. S6K phosphorylates the S6 protein of the 40S ribosomal subunit.
Synonyms:	p70 S6KA; p70(S6K)-alpha; p70-alpha; p70-S6K; PS6K; S6K; S6K-beta-1; S6K1; STK14A

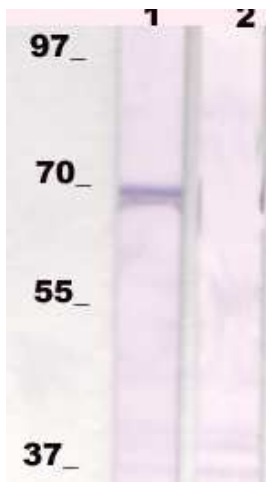


[View online »](#)

Protein Families: Druggable Genome, Protein Kinase

Protein Pathways: Acute myeloid leukemia, ErbB signaling pathway, Fc gamma R-mediated phagocytosis, Insulin signaling pathway, mTOR signaling pathway, TGF-beta signaling pathway

Product images:



WB: The cell lysate derived from 3T3 cells was immunoprobed by Rabbit anti-p70S6K (pS434) at 1:500. An immunoreactive band is observed around ~70kDa (lane 1). This band is blocked by pre-incubation with immunizing peptide (Lane 2)