

Product datasheet for **TA354572**

p53 (TP53) Rabbit Polyclonal Antibody

Product data:

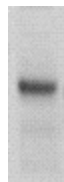
Product Type:	Primary Antibodies
Applications:	IHC, WB
Recommended Dilution:	WB 0.1-1 µg/ml ELISA 0.01-0.1 µg/ml IP 2-5 µg/ml IHC 2-10 µg/ml FC 5-10 µg/ml
Reactivity:	Human, Rat, Mouse
Host:	Rabbit
Isotype:	IgG
Clonality:	Polyclonal
Immunogen:	A synthetic peptide corresponding to the epitope -LPSPH- at a phosphorylation site at serine 37 of human p53 protein
Formulation:	This affinity purified antibody is supplied in sterile Tris-buffered saline (pH7.2) containing antibody stabilizer.
Purification:	The Rabbit IgG is purified by site-modified Epitope Affinity Purification.
Conjugation:	Unconjugated
Storage:	Store at -20°C as received.
Stability:	Stable for 12 months from date of receipt.
Predicted Protein Size:	53 kDa
Gene Name:	tumor protein p53
Database Link:	NP_000537 Entrez Gene 22059 Mouse Entrez Gene 24842 Rat Entrez Gene 7157 Human P04637
Background:	P53, also known as protein 53, or tumor suppressor protein 53, plays important roles in cellular response to DNA damage and other genomic aberration. Mutations in the p53 tumor suppressor gene giving rise to mutant p53 proteins are among the most common genetic alterations associated with tumor cells. P53 protein is phosphorylated at multiple sites in vivo and in vitro in response to different stimuli. UV caused DNA damage can induce Ser9, Ser15, Ser20 phosphorylation while ATM, ATR, DNA-PK at Ser15 and Ser37.
Synonyms:	BCC7; LFS1; P53; TRP53
Protein Families:	Druggable Genome, Stem cell - Pluripotency, Transcription Factors



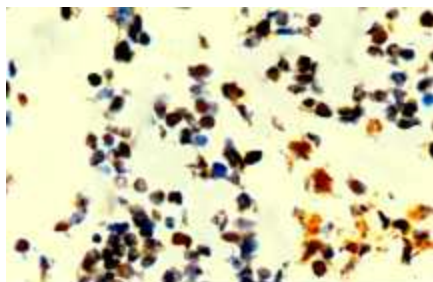
[View online »](#)

Protein Pathways:

Amyotrophic lateral sclerosis (ALS), Apoptosis, Basal cell carcinoma, Bladder cancer, Cell cycle, Chronic myeloid leukemia, Colorectal cancer, Endometrial cancer, Glioma, Huntington's disease, MAPK signaling pathway, Melanoma, Neurotrophin signaling pathway, Non-small cell lung cancer, p53 signaling pathway, Pancreatic cancer, Pathways in cancer, Prostate cancer, Small cell lung cancer, Thyroid cancer, Wnt signaling pathway

Product images:

WB: The cell lysate derived from UV stimulated Hela cells was immunoprobed by Rabbit anti-p53 (pS37) at 1:500. An immunoreactive band is observed around ~53kDa



IHC: UV treated Hela cells cultured in the cell chamber, fixed, and immunoprobed by Rabbit Anti-p53 (pS37) antibody, at 1:100 for 10 min at RT.