

## Product datasheet for **TA354562**

### **S6K1 (RPS6KB1) Rabbit Polyclonal Antibody**

#### **Product data:**

<b>Product Type:</b>	Primary Antibodies
<b>Applications:</b>	WB
<b>Recommended Dilution:</b>	WB 0.1-1 µg/ml ELISA 0.01-0.1 µg/ml IP 2-5 µg/ml IHC 2-10 µg/ml FC 5-10 µg/ml
<b>Reactivity:</b>	Human, Mouse, Rat
<b>Host:</b>	Rabbit
<b>Isotype:</b>	IgG
<b>Clonality:</b>	Polyclonal
<b>Immunogen:</b>	A synthetic peptide corresponding to the epitope -IRSPR- at a phosphorylation site at serine 434 of human p70S6K protein. This sequence is identical within human, rat, mouse, bovine, chicken and dog.
<b>Formulation:</b>	This affinity purified antibody is supplied in sterile Tris-buffered saline (pH7.2) containing antibody stabilizer.
<b>Purification:</b>	The Rabbit IgG is purified by site-modified Epitope Affinity Purification.
<b>Conjugation:</b>	Unconjugated
<b>Storage:</b>	Store at -20°C as received.
<b>Stability:</b>	Stable for 12 months from date of receipt.
<b>Predicted Protein Size:</b>	70 kDa
<b>Gene Name:</b>	ribosomal protein S6 kinase B1
<b>Database Link:</b>	<a href="#">NP_001258971</a> <a href="#">Entrez Gene 72508 MouseEntrez Gene 83840 RatEntrez Gene 6198 Human P23443</a>
<b>Background:</b>	S6 kinase, or p70 S6 Kinase, a mitogen activated Ser/Thr protein kinase, is required for cell growth and G1 cell cycle progression. P70 S6 Kinase and single 4E-BP are phosphorylated via the insulin and target of rapamycin (TOR) signaling pathway which is independent of PI3K and AKT activity. On the other hand, the oncogenic transformation by P3k and Akt is dependent on targets that control translation: transforming activity, which is correlated with phosphorylation and activation of S6K and eliminated by the mTOR inhibitor rapamycin. S6K phosphorylates the S6 protein of the 40S ribosomal subunit.



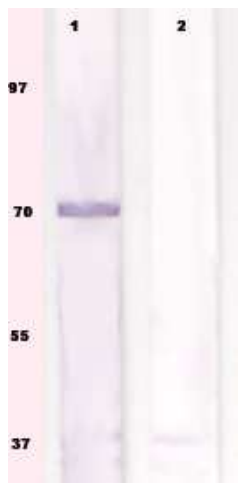
[View online »](#)

**Synonyms:** p70 S6KA; p70(S6K)-alpha; p70-alpha; p70-S6K; PS6K; S6K; S6K-beta-1; S6K1; STK14A

**Protein Families:** Druggable Genome, Protein Kinase

**Protein Pathways:** Acute myeloid leukemia, ErbB signaling pathway, Fc gamma R-mediated phagocytosis, Insulin signaling pathway, mTOR signaling pathway, TGF-beta signaling pathway

**Product images:**



WB: The cell lysate derived from conditioned 3T3 cells was immunoprobed by Rabbit anti-p70S6K (pS434) at 1:500. An immunoreactive band is observed around ~70kDa (lane 1). This band is blocked by preincubation with immunizing peptide (Lane 2)