

Product datasheet for **TA354556**

CD117 Rabbit Polyclonal Antibody

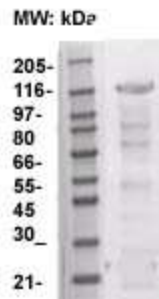
Product data:

Product Type:	Primary Antibodies
Applications:	WB
Recommended Dilution:	WB 0.1-1 µg/ml ELISA 0.01-0.1 µg/ml IP 2-5 µg/ml IHC 2-10 µg/ml FC 5-10 µg/ml
Reactivity:	Human, Mouse, Rat
Host:	Rabbit
Isotype:	IgG
Clonality:	Polyclonal
Immunogen:	Rokhlin OW, et al. a prostate-specific surface-reactive monoclonal antibody. Cancer Lett. 131: 129-136, 1998.
Formulation:	This affinity purified antibody is supplied in sterile Phosphate buffered saline (pH7.2) containing antibody stabilizer.
Purification:	The Rabbit IgG is purified by Epitope Affinity Purification
Conjugation:	Unconjugated
Storage:	Store at -20°C as received.
Stability:	Stable for 12 months from date of receipt.
Predicted Protein Size:	~145 kDa
Gene Name:	KIT proto-oncogene receptor tyrosine kinase
Database Link:	NP_000213 Entrez Gene 16590 Mouse Entrez Gene 64030 Rat Entrez Gene 3815 Human P10721



[View online »](#)

Background:	The c-Kit proto-oncogene encodes a 145 kDa transmembrane receptor (CD117) with tyrosine kinase activity that is structurally related to platelet-derived growth factor. C-Kit/CD117 antigen is expressed on almost all hematopoietic stem and progenitor cells. c-Kit regulates a variety of biological responses including cell proliferation, apoptosis, chemotaxis and adhesion. Ligand binding to the extracellular domain leads to autophosphorylation on several tyrosine residues within the cytoplasmic domain and activation. Mutations in c-Kit have been found to be important for tumor growth and progression in a variety of cancers including mast cell diseases, gastrointestinal stromal tumor, acute myeloid leukemia, Ewing sarcoma and lung cancer. C-kit plays an important role in hematopoiesis, melanogenesis, and gametogenesis.
Synonyms:	C-Kit; CD117; PBT; SCFR
Protein Families:	Adult stem cells, Druggable Genome, Embryonic stem cells, ES Cell Differentiation/IPS, Protein Kinase, Stem cell - Pluripotency, Transmembrane
Protein Pathways:	Acute myeloid leukemia, Cytokine-cytokine receptor interaction, Endocytosis, Hematopoietic cell lineage, Melanogenesis, Pathways in cancer

Product images:

WB: The whole cell lysate derived from Jurkat cell was separated in 10% SDS-PAGE, transferred onto NC membrane, and immunoblotted by Rabbit anti-CD117/c-Kit (CT) antibody at 1:500. An immunoreactive band around ~145 kDa was observed.