

Product datasheet for **TA354547**

Ephrin B3 (EFNB3) Rabbit Polyclonal Antibody

Product data:

Product Type:	Primary Antibodies
Applications:	IHC, WB
Recommended Dilution:	WB 0.1-1 µg/ml ELISA 0.01-0.1 µg/ml IP 2-5 µg/ml IHC 2-10 µg/ml FC 5-10 µg/ml
Reactivity:	Human
Host:	Rabbit
Isotype:	IgG
Clonality:	Polyclonal
Immunogen:	Recombinant full length (1-340aa) human Ephrin-B34 protein expressed in E.coli.
Formulation:	This affinity purified antibody is supplied in sterile Phosphate buffered saline (pH7.2) containing antibody stabilizer.
Purification:	The Rabbit IgG is purified by Epitope Affinity Purification
Conjugation:	Unconjugated
Storage:	Store at -20°C as received.
Stability:	Stable for 12 months from date of receipt.
Predicted Protein Size:	35 kDa
Gene Name:	ephrin B3
Database Link:	NP_001397 Entrez Gene 1949 Human Q15768



[View online »](#)

Background:

Ehrin-B3, also known as EFNB3, a member of the ephrin gene family, is important in brain development as well as in its maintenance. It is highly expressed in several forebrain subregions compared to other brain subregions, it may play a pivotal role in forebrain function. The EPH and EPH-related receptors comprise the largest subfamily of receptor protein-tyrosine kinases and have been implicated in mediating developmental events, particularly in the nervous system. The ephrin ligands and receptors have been divided into two major subclasses: Ephrin-A and ephrin-B. Based on their structures and sequence relationships, ephrins are divided into the ephrin-A (EFNA) class, which are anchored to the membrane by a glycosylphosphatidylinositol linkage, and the ephrin-B (EFNB) class, which are transmembrane proteins. The Eph family of receptors are similarly divided into 2 groups based on the similarity of their extracellular domain sequences and their affinities for binding ephrin-A and ephrin-B ligands.

Synonyms:

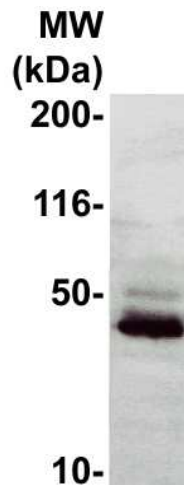
EFL6; EPLG8; LERK8

Protein Families:

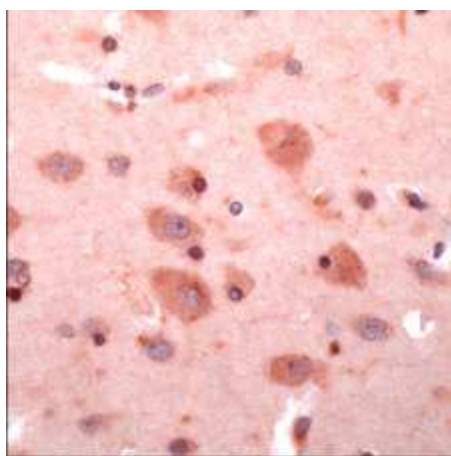
Druggable Genome, Transmembrane

Protein Pathways:

Axon guidance

Product images:

WB: The full length recombinant protein was immunoblotted by the Rabbit anti-EphrinB3 antibody at 1:500. An immunoreactive band around 35 kDa was observed.



IHC: Human brain tissue stained with Rabbit anti-EphrinB3 antibody at 1:50 for 30 min, RT.
(Staining of formalin-fixed tissues requires boiling tissue section in 10 mM Citrate Buffer, pH 6.0 for 10 min followed by cooling at RT for 20 min.)