

Product datasheet for **TA354544**

Prostate Specific Antigen (KLK3) Rabbit Polyclonal Antibody

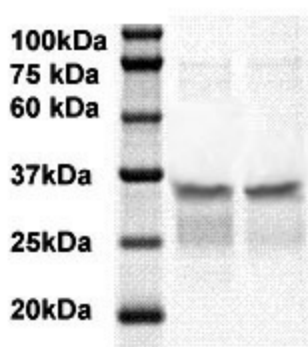
Product data:

Product Type:	Primary Antibodies
Applications:	WB
Recommended Dilution:	WB 0.1-1 µg/ml ELISA 0.01-0.1 µg/ml IP 2-5 µg/ml IHC 2-10 µg/ml FC 5-10 µg/ml
Reactivity:	Human
Host:	Rabbit
Isotype:	IgG
Clonality:	Polyclonal
Immunogen:	A synthetic peptide corresponding to N-Terminus of human PSA protein.
Formulation:	This affinity purified antibody is supplied in sterile Phosphate buffered saline (pH7.2) containing antibody stabilizer.
Purification:	The Rabbit IgG is purified by Epitope Affinity Purification
Conjugation:	Unconjugated
Storage:	Store at -20°C as received.
Stability:	Stable for 12 months from date of receipt.
Predicted Protein Size:	~27 kDa
Gene Name:	kallikrein related peptidase 3
Database Link:	NP_001025218 Entrez Gene 354 Human P07288
Background:	Prostate specific antigen (PSA), also called kallikrein-3, is a chymotrypsin-like serine protease exclusively produced by the prostate epithelium, and abundant in seminal fluid. The PSA is an established tumor marker that aids in the diagnosis, staging and follow up of prostate cancer. PSA can be detected in the sera of patients with prostatic carcinoma.
Synonyms:	APS; hK3; KLK2A1; PSA
Protein Families:	Druggable Genome, Protease, Secreted Protein
Protein Pathways:	Pathways in cancer, Prostate cancer



[View online »](#)

Product images:



WB: The whole cell lysates derived from LNCap (lane 1) and HEK293 (lane 2) were immunoblotted by Rabbit anti-PSA at 1:500.