

Product datasheet for **TA354541**

CSN3 Rabbit Polyclonal Antibody

Product data:

Product Type:	Primary Antibodies
Applications:	WB
Recommended Dilution:	WB 0.1-1 µg/ml ELISA 0.01-0.1 µg/ml IP 2-5 µg/ml IHC 2-10 µg/ml FC 5-10 µg/ml
Reactivity:	Mouse
Host:	Rabbit
Isotype:	IgG
Clonality:	Polyclonal
Immunogen:	A synthetic peptide corresponding to the N-terminus of mouse Casein protein.
Formulation:	This affinity purified antibody is supplied in sterile Phosphate buffered saline (pH7.2) containing antibody stabilizer.
Purification:	The Rabbit IgG is purified by Epitope Affinity Purification
Conjugation:	Unconjugated
Storage:	Store at -20°C as received.
Stability:	Stable for 12 months from date of receipt.
Predicted Protein Size:	~21 kDa
Gene Name:	casein kappa
Database Link:	NP_005203 Entrez Gene 1448 Human P07498



[View online »](#)

Background:

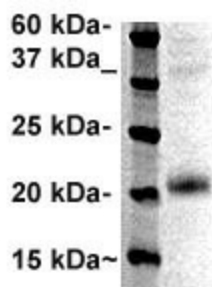
Casein is the predominant phosphoprotein which has no disulphide bridges but rich in proline. It is found in fresh milk, as a salt of calcium. Casein is not coagulated by heat. It is precipitated by acids and by rennet, a proteolytic enzyme typically obtained from the stomachs of calves. The enzyme trypsin can hydrolyze off a phosphate-containing peptone. This protein is synthesized by mammary epithelium only in the presence of lactogenic hormone combination of insulin, hydrocortisone, and prolactin. Enhancement of the rate of secretion of newly-synthesised caseins occurs when mammary explants are challenged in vitro with agents that activate protein kinase A (PKA). The PKA-sensitive step(s) in casein secretion is early in the exocytosis pathway but inhibition of PKA does not impair casein maturation. PKA is located on membranes of vesicles situated in the Golgi region. Casein positive cells are present in all breast carcinomas with a variable distribution and degree of staining. Casein serves as an in vitro marker of terminally differentiated breast luminal epithelial cells.

Synonyms:

CSN10; CSNK; KCA

Protein Families:

Secreted Protein

Product images:

WB: The whole cell lysate derived from mouse mammary gland was separated in 12% SDS-PAGE, transferred onto NC membrane, and immunoblotted by Rabbit anti-Csnk antibody at 1:500. An immunoreactive band around ~21 kDa was observed.