

## Product datasheet for **TA354540**

### **EWSR1 Rabbit Polyclonal Antibody**

#### **Product data:**

<b>Product Type:</b>	Primary Antibodies
<b>Applications:</b>	WB
<b>Recommended Dilution:</b>	WB 0.1-1 µg/ml ELISA 0.01-0.1 µg/ml IP 2-5 µg/ml IHC 2-10 µg/ml FC 5-10 µg/ml
<b>Reactivity:</b>	Human, Mouse, Rat
<b>Host:</b>	Rabbit
<b>Isotype:</b>	IgG
<b>Clonality:</b>	Polyclonal
<b>Immunogen:</b>	A synthetic peptide corresponding to the internal segment of EWSR1 protein. This sequence is identical among human, rat, mouse and dog species.
<b>Formulation:</b>	This affinity purified antibody is supplied in sterile Phosphate buffered saline (pH7.2) containing antibody stabilizer.
<b>Purification:</b>	The Rabbit IgG is purified by Epitope Affinity Purification
<b>Conjugation:</b>	Unconjugated
<b>Storage:</b>	Store at -20°C as received.
<b>Stability:</b>	Stable for 12 months from date of receipt.
<b>Predicted Protein Size:</b>	~70 kDa
<b>Gene Name:</b>	EWS RNA binding protein 1
<b>Database Link:</b>	<a href="#">NP_001156757</a> <a href="#">Entrez Gene 14030 Mouse</a> <a href="#">Entrez Gene 289752 Rat</a> <a href="#">Entrez Gene 2130 Human</a> <a href="#">Q01844</a>



[View online »](#)

**Background:**

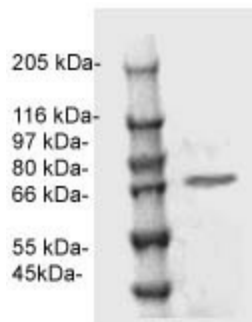
The EWSR1 gene encodes a putative RNA binding protein. Mutation in this gene causes Ewing sarcoma and neuroectodermal and various other tumors. This gene is involved in a number of different sarcomas as a result of chromosomal translocations. EWSR1 is fused to an ETS transcription factor (FLI-1, ERG, ETV-1, E1AF or FEV) in Ewing sarcoma; to activating transcription factor-1 (ATF-1) in soft tissue clear cell sarcoma; to Wilms Tumor -1 (WT1) in desmoplastic small round cell; to nuclear receptor 4A3 (NR4A3) in extraskeletal myxoid chondrosarcoma, and to C/EBP-homologous protein (CHOP) in myxoid liposarcoma. EWSR1 genes are required for mitotic integrity and survival of neural cells in the early embryonic development, and that the involvement of EWSR1 in mitotic stability is conserved from zebrafish to human.

**Synonyms:**

bK984G1.4; EWS; EWS-FLI1

**Protein Families:**

Druggable Genome, Stem cell - Pluripotency, Transcription Factors

**Product images:**

WB: The whole cell lysate derived from mouse brain tissue was separated in 10% SDS-PAGE, transferred onto NC membrane, and immunoblotted by Rabbit anti-EWSR1 antibody at 1:500. An immunoreactive band around ~70 kDa was observed.