

Product datasheet for **TA354537**

Ezrin (EZR) Rabbit Polyclonal Antibody

Product data:

Product Type:	Primary Antibodies
Applications:	WB
Recommended Dilution:	WB 0.1-1 µg/ml ELISA 0.01-0.1 µg/ml IP 2-5 µg/ml IHC 2-10 µg/ml FC 5-10 µg/ml
Reactivity:	Human, Mouse, Rat
Host:	Rabbit
Isotype:	IgG
Clonality:	Polyclonal
Immunogen:	A synthetic peptide corresponding to the C-term portion of human Ezrin protein. This sequence is identical to human, rat, mouse, dog, Monkey, zebra fish, and human origins.
Formulation:	This affinity purified antibody is supplied in sterile Phosphate buffered saline (pH7.2) containing antibody stabilizer.
Purification:	The Rabbit IgG is purified by Epitope Affinity Purification
Conjugation:	Unconjugated
Storage:	Store at -20°C as received.
Stability:	Stable for 12 months from date of receipt.
Predicted Protein Size:	~81 kDa
Gene Name:	ezrin
Database Link:	NP_001104547 Entrez Gene 22350 Mouse Entrez Gene 54319 Rat Entrez Gene 7430 Human P15311



[View online »](#)

Background:

Villin 2, also known as Ezrin, p81, 80K, or cytovillin, is a cytoplasmic peripheral membrane protein which is enriched in microvilli and other cell surface structures. Villin belongs to a member of the gelsolin family of calcium-regulated actin-binding proteins. Unlike the ubiquitously expressed gelsolin, villin expression is restricted to simple epithelia of the gastrointestinal and urogenital tracts. It is localized to the apical cytoplasm and brush borders of these cells. Villin functions in the regulation of actin dynamics in the apical epithelium, capping, nucleating and/or severing actin filaments in a calcium-dependent manner and regulating cell shape in response to external stimuli. Villin serves as a tyrosine kinase substrate, and is phosphorylated in EGF-stimulated cells. This protein plays a key role in cell surface structure adhesion, migration and organization, and it has been implicated in various human cancers.

Synonyms:

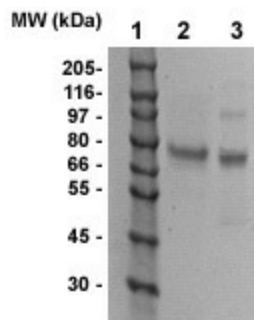
CVIL; CVL; HEL-S-105; VIL2

Protein Families:

Druggable Genome

Protein Pathways:

Leukocyte transendothelial migration, Pathogenic Escherichia coli infection, Regulation of actin cytoskeleton

Product images:

WB: The Cell lysate derived from HeLa (lane 2) and HT-29 (Lane 3) were resolved onto 10% SDS-PAGE, transferred onto NC membrane, and immunoblotted by Rb anti-Villin 2 at 1:500. An immunoreactive band around ~80 kDa was observed.