

Product datasheet for **TA354536**

CD20 (MS4A1) Mouse Monoclonal Antibody

Product data:

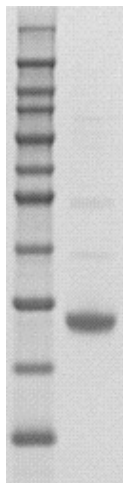
Product Type:	Primary Antibodies
Applications:	IHC, WB
Recommended Dilution:	WB 0.1-1 µg/ml ELISA 0.01-0.1 µg/ml IP 2-5 µg/ml IHC 2-10 µg/ml FC 5-10 µg/ml
Reactivity:	Human
Host:	Mouse
Isotype:	IgG2a
Clonality:	Monoclonal
Immunogen:	A synthetic peptide corresponding to C-terminus of human CD20 protein.
Formulation:	This affinity purified antibody is supplied in sterile Phosphate buffered saline (pH7.2) containing antibody stabilizer.
Purification:	The mouse IgG is purified by Protein A-Affinity Chromatography according to Isotyping
Conjugation:	Unconjugated
Storage:	Store at -20°C as received.
Stability:	Stable for 12 months from date of receipt.
Predicted Protein Size:	34 kDa
Gene Name:	membrane spanning 4-domains A1
Database Link:	NP_068769 Entrez Gene 931 Human P11836
Background:	CD20, a non-glycosylated protein, belongs to a member of the membrane-spanning 4A gene family. The molecular weight is at a range of ~34-37kDa depending on the degree of the protein phosphorylation. The CD20 antigen is present on human pre B lymphocytes and B lymphocytes at all stages of maturation. Thus, it plays an important role in the development and differentiation of B-cells into plasma cells. Low level of CD20 expression appears on normal T lymphocytes. Combination of chemo and humanized CD20 antibodies has been reported in clinical study of lymphoma diseases.
Synonyms:	B1; Bp35; CD20; CVID5; LEU-16; MS4A2; S7
Protein Families:	Druggable Genome, Transmembrane



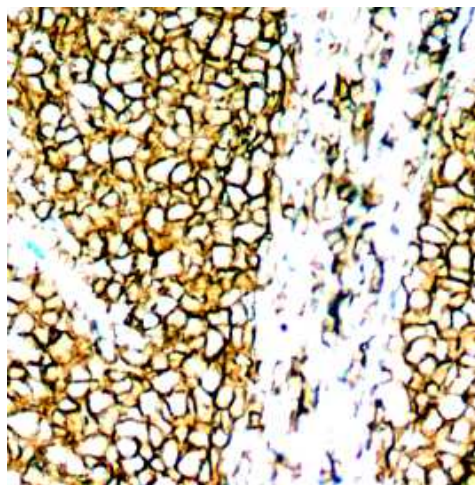
[View online »](#)

Protein Pathways: Hematopoietic cell lineage

Product images:



WB: The whole cell lysates derived from human spleen were immunoblotted by Rabbit anti-CD20 antibody at 1:1000.



IHC: Human tonsil tissue was stained with Anti-CD20 antibody, at 1:200 for 10 min at RT. Staining of formalin-fixed tissue requires boiling tissue sections in 10 mM Citrate Buffer, pH 6.0 for 10 min followed by cooling at RT for 20 min.