

## Product datasheet for **TA354522**

### Aggrecan (ACAN) Rabbit Polyclonal Antibody

#### Product data:

Product Type:	Primary Antibodies
Applications:	WB
Recommended Dilution:	WB 0.1-1 µg/ml ELISA 0.01-0.1 µg/ml IP 2-5 µg/ml IHC 2-10 µg/ml FC 5-10 µg/ml
Reactivity:	Human, Mouse, Rat
Host:	Rabbit
Isotype:	IgG
Clonality:	Polyclonal
Immunogen:	A synthetic peptide corresponding to the 380-400 aa of human ACAN protein. This sequence is identical to bovine, mouse and rat.
Formulation:	This affinity purified antibody is supplied in sterile Phosphate buffered saline (pH7.2) containing antibody stabilizer.
Purification:	The Rabbit IgG is purified by Epitope Affinity Purification
Conjugation:	Unconjugated
Storage:	Store at -20°C as received.
Stability:	Stable for 12 months from date of receipt.
Predicted Protein Size:	>200 kDa
Gene Name:	aggrecan
Database Link:	<a href="#">NP_001126</a> <a href="#">Entrez Gene 11595 Mouse</a> <a href="#">Entrez Gene 58968 Rat</a> <a href="#">Entrez Gene 176 Human</a> <a href="#">P16112</a>



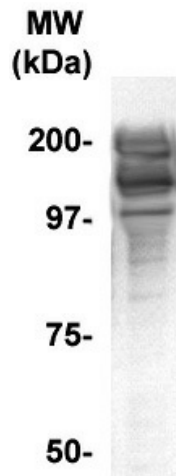
[View online »](#)

**Background:**

Aggrecan or aggregating chondroitin sulfate proteoglycan, is an integral part of the extracellular matrix in cartilagenous tissue. Many individual monomers of aggrecan bind to hyaluronic acid to form an aggregate, the monomer is known as aggrecan. The aggregates are comprised of up to 100 monomers attached to a single chain of hyaluronic acid. The high content of negatively charged polysaccharide chains contributes to the osmotic swelling of cartilage and in combination with intact collagen fibers results in articular cartilage resistance to compressive forces and high tensile strength. Aggrecan is abundant in articular cartilage and comprises 10% of its dry weight. The cleavage of Aggrecan has been associated with a number of degenerative diseases including rheumatoid arthritis and osteoarthritis. Mutations in this gene may be involved in skeletal dysplasia and spinal degeneration.

**Synonyms:**

AGC1; AGCAN; CSPG1; CSPGCP; MSK16; SEDK

**Product images:**

WB: The tissue lysate derived from mouse embryonic tissue was resolved onto 7.5% SDS-PAGE, transferred onto NC membrane, and immunoblotted by Rb anti-Aggrecan at 1:500. multiple immunoreactive bands ~above 100 kDa was observed.