

## Product datasheet for **TA354519**

### Calumenin (CALU) Rabbit Polyclonal Antibody

#### Product data:

Product Type:	Primary Antibodies
Applications:	WB
Recommended Dilution:	WB 0.1-1 µg/ml ELISA 0.01-0.1 µg/ml IP 2-5 µg/ml IHC 2-10 µg/ml FC 5-10 µg/ml
Reactivity:	Human, Mouse, Rat
Host:	Rabbit
Isotype:	IgG
Clonality:	Polyclonal
Immunogen:	A synthetic peptide corresponding to the N-terminus of Calumenin protein. This sequence is identical to rat, mouse and human origins.
Formulation:	This affinity purified antibody is supplied in sterile Phosphate buffered saline (pH7.2) containing antibody stabilizer.
Purification:	The Rabbit IgG is purified by Epitope Affinity Purification
Conjugation:	Unconjugated
Storage:	Store at -20°C as received.
Stability:	Stable for 12 months from date of receipt.
Predicted Protein Size:	~48 kDa
Gene Name:	calumenin
Database Link:	<a href="#">NP_001124146</a> <a href="#">Entrez Gene 12321 Mouse</a> <a href="#">Entrez Gene 64366 Rat</a> <a href="#">Entrez Gene 813 Human</a> <a href="#">O43852</a>



[View online »](#)

**Background:**

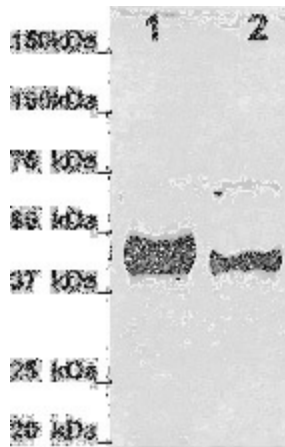
Calumenin (CALU) is a calcium binding protein localized in the endo/sarcoplasmic reticulum (ER) in mammalian tissues. It is involved ER and Golgi apparatus named CERC which is an acronym for its family members Cab-45, reticulocalbin, Erc-55 and Calumenin. The CALU gene encodes a deduced 315aa protein containing six- EF-hand Ca<sup>2+</sup>-binding protein with one potential N-glycosylation site, and a C-terminal ER retention signal. The human and mouse/rat CALU proteins are 98% identical. Two isoforms exist in cardiac and skeletal muscles, but Calumenin-2 is the main isoforms in skeletal muscle. Increasing in the expression of Calumenin in chemotherapeutic drug resistance in neoplastic cells is observed. It is also involved in the pathophysiology of thrombosis or in wound healing. CALU mRNA is ubiquitously expressed in human tissues and maps to 7q32.

**Synonyms:**

FLJ90608

**Protein Families:**

Secreted Protein

**Product images:**

WB: Tissue lysate from Mouse cardiac muscle (lane 1) and mouse skeletal muscle (lane 2) were resolved onto 12% SDS-PAGE and transferred onto NC Membrane, then immune-probed by AntiCalumenin antibody, at 1:500.