

## Product datasheet for **TA354516**

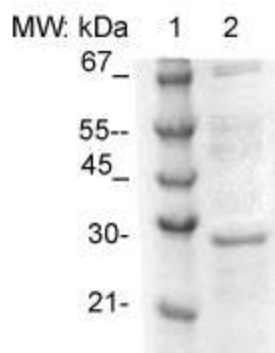
### TPD52 Rabbit Polyclonal Antibody

#### Product data:

Product Type:	Primary Antibodies
Applications:	WB
Recommended Dilution:	WB 0.1-1 µg/ml ELISA 0.01-0.1 µg/ml IP 2-5 µg/ml IHC 2-10 µg/ml FC 5-10 µg/ml
Reactivity:	Mouse, Rat, Human, Chicken, Bovine
Host:	Rabbit
Isotype:	IgG
Clonality:	Polyclonal
Immunogen:	A synthetic peptide corresponding to the internal sequence of tumor protein D52 (Tpd52). This sequence is identical to mouse, rat, human, chicken and bovine origins.
Formulation:	This affinity purified antibody is supplied in sterile Phosphate buffered saline (pH7.2) containing antibody stabilizer.
Purification:	The Rabbit IgG is purified by Epitope Affinity Purification
Conjugation:	Unconjugated
Storage:	Store at -20°C as received.
Stability:	Stable for 12 months from date of receipt.
Predicted Protein Size:	~24 kDa
Gene Name:	tumor protein D52
Database Link:	<a href="#">NP_001020423</a> <a href="#">Entrez Gene 21985 Mouse</a> <a href="#">Entrez Gene 294900 Rat</a> <a href="#">Entrez Gene 7163 Human</a> <a href="#">P55327</a>
Background:	Tumor protein D52 (Tpd52), a ~24 kDa protein, was originally identified through its elevated expression level in human breast carcinoma. It may play roles in calcium-mediated signal transduction and cell proliferation. Tpd52 is involved in transformation and metastasis and has been shown to be over-expressed in tumor cells compared to normal cells and tissues. It is might be a significant biomarker in tumor diagnosis.
Synonyms:	D52; hD52; N8L; PC-1; PrLZ



[View online »](#)

**Product images:**

WB: The Cell lysate derived from MCF-7 (Lane 2) were resolved onto 12% SDS-PAGE, transferred onto NC membrane, and immunoblotted by Rabbit anti-Tpd52 at 1:500. An immunoreactive band around ~24 kDa was observed.